

# BAYONET CAP LAMPHOLDERS

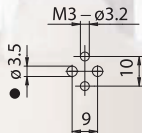
## P37M



*Note: to tighten the clamps screws, use a screwdriver with a slot max. diameter 3,5 mm.*

- Steatite body.  
Contact in nickel-plated brass.  
Contacts pressure springs in normalized stainless steel.  
Brass clamps with slot screws not completely tightened.
- Weight: 30 g.

- Instructions to fix the lampholder on structures.



● Suggested minimum dimension for cables passage (if necessary)

- Fixing of the lampholder using the holes diameter 3,2 mm with center distance 10 mm. (attention: max diameter of screw head 4,5 mm).
- Note: it is possible to supply the fixing screws:
  - M3 x 16 with reduced slot head (ref. art. 502)
  - Thread-forming 2,2 x 16 mm with star-slotted head (ref. art. 514).
  - Thread-forming for plastic 2,5 x 15 mm with star-slotted head (ref. art. 655).

### Lampholder:

Maximum power:  
Rated voltage:  
Working temperature:  
Type of clamps for cable connection:  
Clamps connecting capacity:  
In conformity to the standards:

**B15d**

**500 W**  
**125 V**  
**T 250°C**

**SCREW CLAMPS**  
**0,50 ÷ 1,00 mm<sup>2</sup>**  
**UL 496**  
**CSA 22.2 N.43**

### Approval marks:

**cURus**

Single-conductor flexible connecting cables, black and white polarized, which could be connected to the lampholder (arranged with crimped end-terminals or with stripping 6 mm):

Insulation	T in °C	Conduct.	Available voltages and AWG		
			300V	600V	18AWG
Silicone <i>Single insulation</i>	200	CuSn		•	•
Silicone+glass-braid <i>Single insulation</i>	200	CuSn		•	•
FEP <i>Single insulation</i>	200	CuNi	•	•	•
FEP+FEP <i>Double insulation</i>	200	CuNi	•		•
PTFE <i>Single insulation</i>	250	CuNi	•	•	•
PTFE+PFA <i>Double insulation</i>	250	CuNi	•		•



# P37

1987

**Lampholder:****B15d**

Rated voltage:

**250 V**

Rated current:

**8 A**

Working temperature:

**T 250°C**

Type of clamps for

cables connection:

**SCREW CLAMPS**

Clamps connecting capacity:

**0,50 ÷ 1,00 mm<sup>2</sup>**

Overvoltage category:

**III**

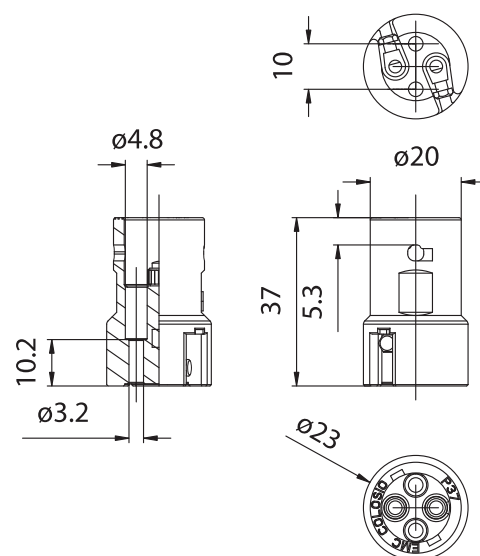
Protection degree (IP):

**IP20**

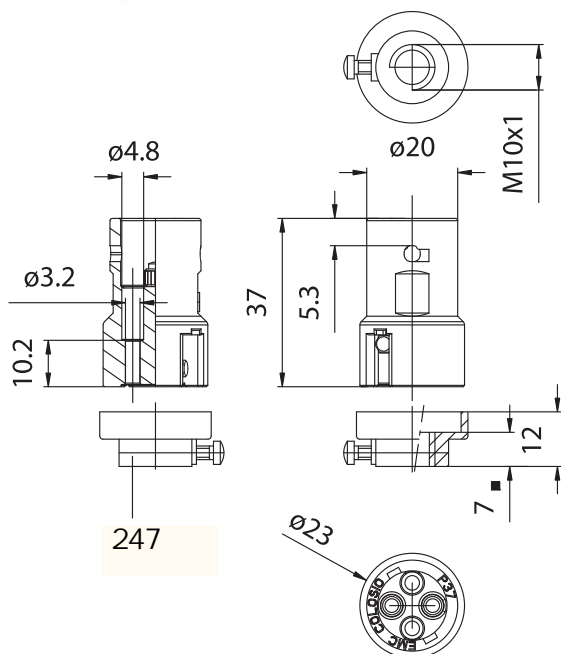
In conformity to the standards:

**EN 61184**In conformity to the requirements  
of the directive:**2014/35/EU**

Approval marks:

**ENEC 03**

# P37H



● Depth of thread

**P37H:** lampholder P37 equipped with adapter in black PA66 20% G.F. T140°C, 12 mm height, with threaded hole M10 x1 with screw for nipple-block (ref. art. 247).

Note: this code is supplied with the adapter unassembled on the lampholder (included the two thread-forming screws for plastic 2,5 x 15 mm with star-slotted head - ref. art. 655).

- Weight: 35 g.

- Fixing of the lampholder by M10 x1 nipples.

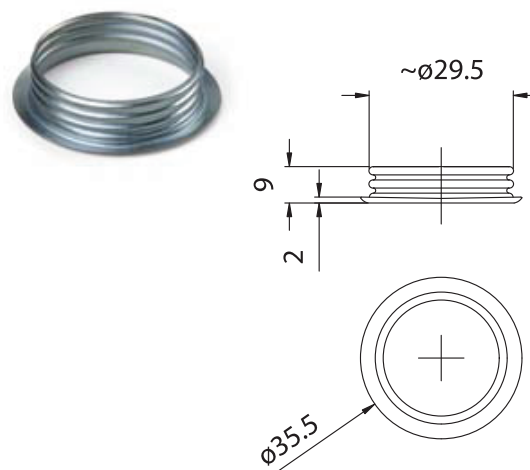
## 428/36



**428/36:** case, in white zinc-plated iron, with round thread 28 x2 mm, height 36 mm.

- Weight: 8 g.

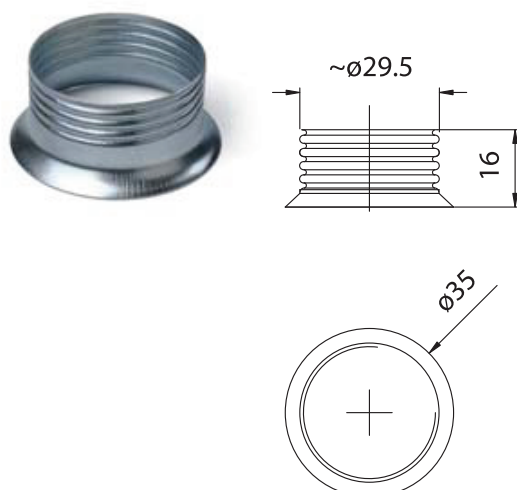
## 428FV/9



**428FV/9:** ring-nut, in white zinc-plated iron, with plain ledge with round thread 28 x2 mm, height 9 mm, for case 428/36.

- Weight: 2 g.

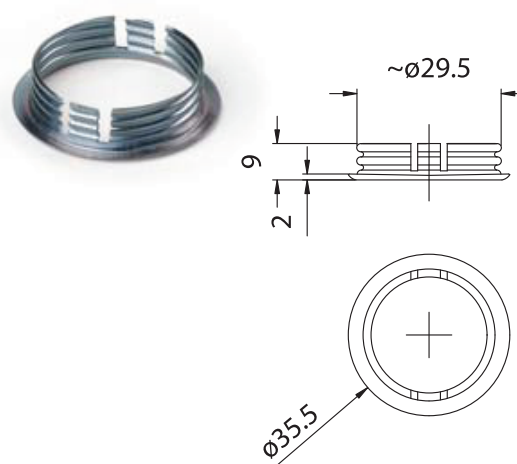
## 428F/16



**428F/16:** ring-nut, in white zinc-plated iron, with round thread 28 x2 mm, height 16 mm, for case 428/36.

- Weight: 2 g.

## 428FV/9T6



**428FV/9T6:** ring-nut, in white zinc-plated iron, with plain ledge with round thread 28 x2 mm, height 9 mm, with rifts, for case 428/36.

- Weight: 2 g.

*Note: this ring-nut works properly when inserted in holes diameter  $29,5 \pm 0,2$  mm.*