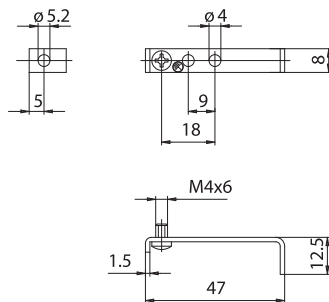


## 209

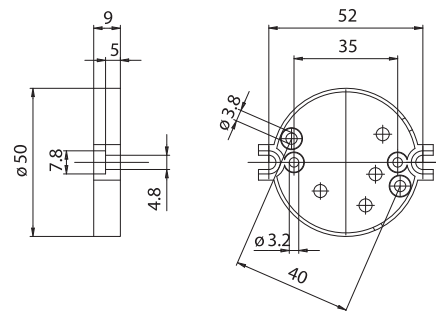


**209:** 90° bracket, in white zinc-plated iron, with hole diameter 5,2 mm and earth-screw, for fixing on structures with threaded holes M4.  
For lampholders: P03-, P05, P10 and P40.

- Weight: 5 g.

Note: screws or rivets, inserted in the holes with center distance 18 mm, to fix the bracket to the lampholders.

## 227

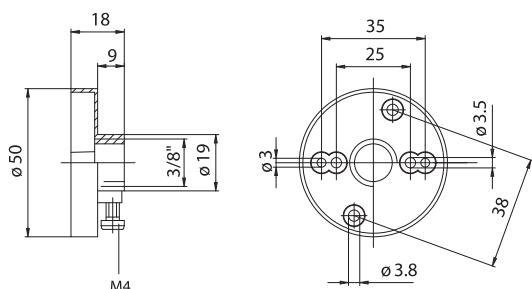


**227:** Closing base for double insulation in black PA66 20% G.F. V2, T140°C, with center distance 52 mm.  
For lampholders: P15, P15A, P20, P25 and P27.

- Weight: 8 g.

Note: thread-forming 4,2 x 13 mm or metric M4 x 12 screws, with star-slotted head, to fix the base to the lampholders.

## 228

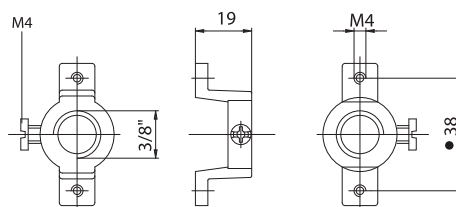


**228:** adapter with threaded hole 3/8", in black PA66 20% G.F. V2, T140°C, with screw for nipple-block.  
For lampholders: P15, P20, P25 and P27.

- Weight: 10 g.

Note: thread-forming 4,2 x 13 mm or metric M4 x 12 screws, with cross-slotted head, to fix the adapter to the lampholders.

## 230



**230:** adapter, in white zinc-plated aluminium, with threaded hole 3/8" with center distance 38 mm, to fix the lampholder, and with screw for nipple-block.  
For lampholder: P15.

- Weight: 10 g.

Note: M4 x 12 screws, to fix the adapter to the lampholder.

**230A:** ● adapter as 230, with fixing center distance 34 mm.  
For lampholder P25.

**230C:** ● adapter as 230, with fixing center distance 36 mm.  
For lampholder P40.