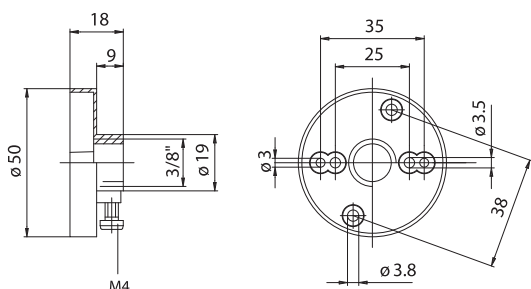


228

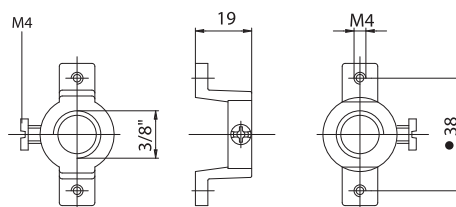


228: adapter with threaded hole 3/8", in black PA66 20% G.F. V2, T140°C, with screw for nipple-block.
For lampholders: P15, P20, P25 and P27.

- Weight: 10 g.

Note: thread-forming 4,2 x 13 mm or metric M4 x 12 screws, with cross-slotted head, to fix the adapter to the lampholders.

230



230: adapter, in white zinc-plated aluminium, with threaded hole 3/8" with center distance 38 mm, to fix the lampholder, and with screw for nipple-block.
For lampholder: P15.

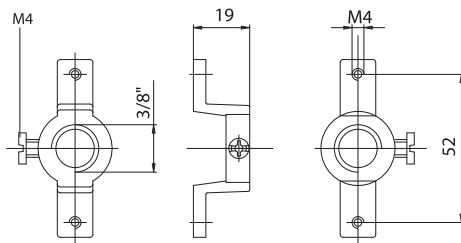
- Weight: 10 g.

Note: M4 x 12 screws, to fix the adapter to the lampholder.

230A: ● adapter as 230, with fixing center distance 34 mm.
For lampholder P25.

230C: ● adapter as 230, with fixing center distance 36 mm.
For lampholder P40.

231

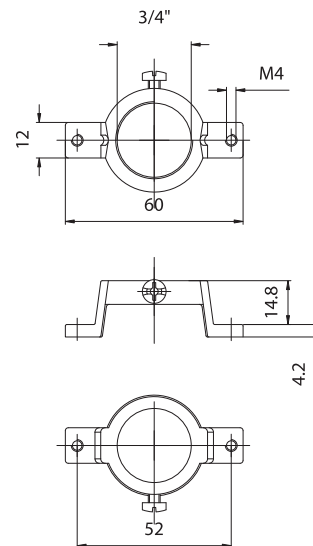


231: adapter, in white zinc-plated aluminium, with threaded hole 3/8" with center distance 52 mm, to fix the lampholder, and with screw for nipple-block.
For lampholders: P15A, P25D and P27D.

- Weight: 10 g.

Note: M4 x 12 screws, to fix the adapter to the lampholder.

233



233: adapter, in white zinc-plated aluminium, with threaded hole 3/4" with center distance 52 mm, to fix the lampholder, with screw for nipple-block.
For lampholders: P15A, P25D and P27D.

- Weight: 15 g.

Note: M4 x 12 screws, to fix the adapter to the lampholder.