

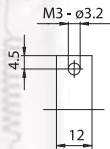
LAMPHOLDERS FOR INCANDESCENT HALOGEN LAMPS

Attention: the back side of this lampholder has uncovered parts under tension. During the project verify that the surface and air distance, prescribed by lighting fixtures construction standards, will be respected. Verify also the protection against accidental contacts.

Note: the version A01P, lampholder equipped with protection device in LCP, grants the protection against electrical shocks caused by accidental contacts with the back side of the lampholder.

A01F, lampholder with micarta plate positioned between the contacts and the pressure spring. The insulation plate grants the protection against the electric shock with the standardized IEC 529 test-finger in the contact area lamp-lampholder, with inserted lamp. PATENTED

- Steatite body.
Contacts in electrolytic copper and silver.
Pressure spring in nickel-plated, hardened and normalized, steel.
Self-threading fixing screws M3.
- Weight of the lampholders pair in standard execution (with cables L= 25 cm): 50 g.
- D: fixing distance of the lampholders pair on rigid structures:
 - 54,7 mm for lamps with R7s cap, with "Z nom." lamp 74,9 mm
 - 94,0 mm for lamps with R7s cap, with "Z nom." lamp 114,2 mm
- d: distance between contacts = D + 16,4 mm
- Indications to fix the lampholder on structures.



- Fixing of the lampholders pair by M3 self-threading screws inserted in the bodies. Standard screw M3 x 8 with cross head. Other lengths on request (minimum length for threaded supports: 6 mm).

A01



Lampholder:	R7s
Maximum power:	1500 W
Rated voltage:	250 V
Working temperature:	T 250°C
Connected cables	
working temperature:	T 105°÷ 250°C
In conformity to the standards:	UL 496 CSA 22.2 N.43
Approval marks:	cURus

Single-conductor flexible connecting cables, polarized black and white, crimped to the lampholder:

Insulation	T in °C	Conduct.	Available voltages and AWG		
			300V	600V	18AWG
Silicone Single insulation	200	CuSn		•	•
Silicone+glass-braid Single insulation	200	CuSn		•	•
FEP Single insulation	200	CuNi	•	•	•
FEP+FEP Double insulation	200	CuNi	•		•
PTFE Single insulation	250	CuNi	•	•	•
PTFE+PFA Double insulation	250	CuNi	•		•



FOR NET TENSION 110 - 250V

A01

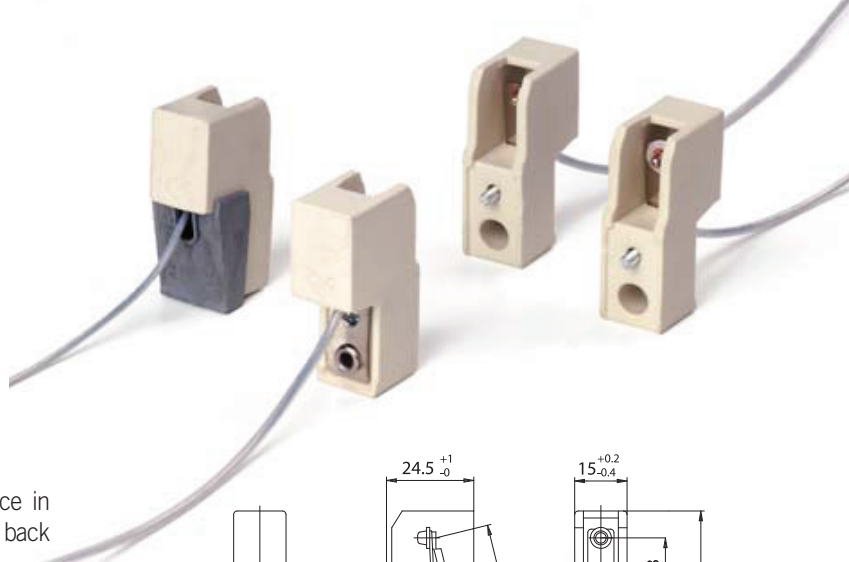
1984-1998



Lampholder:

Rated voltage:
Rated current:
Working temperature:
Connected cables
working temperature:
Overvoltage category:
Protection degree (IP):
In conformity to the standards:
In conformity to the requirements
of the directive:
Approval marks:

R7s
500 V
6 A
T 300°C
T 105°÷ 250°C
III
IP00
EN 60838-1
2014/35/EU
CQC

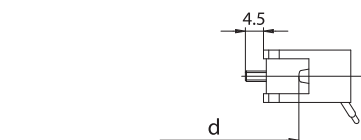
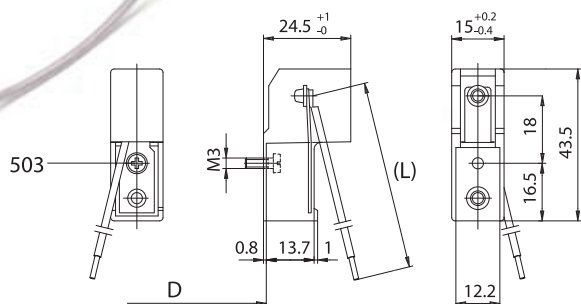


A01P: A01 lampholder equipped with protection device in LCP T250°C (T240°C for UL), which covers the back pressure springs.

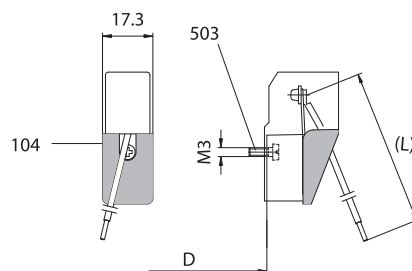
A01F: A01 lampholder with micarta plate positioned between the contacts and the pressure springs.

Single-conductor flexible connecting cables crimped to the lampholder:

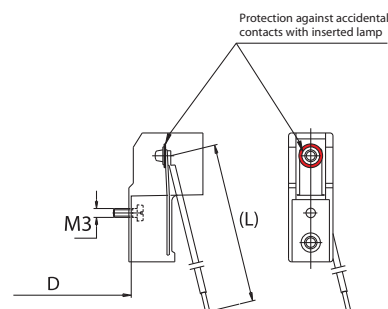
Insulation	T in °C	Conduct.	Available sections in mm ²			
			0,50	0,75	1,00	1,50
Silicone <i>Single insulation</i>	180	CuSn	•	•	•	•
Silicone+Silicone <i>Double insulation</i>	180	CuSn		•	•	•
Silicone+glass-braid <i>Single insulation</i>	180	CuSn	•	•	•	•
FEP <i>Single insulation</i>	180	CuSn	•	•	•	•
FEP+FEP <i>Double insulation</i>	180	CuSn	•	•	•	•
FEP+FEP+FEP <i>Triple insulation</i>	180	CuSn	•	•	•	•
PTFE <i>Single insulation</i>	180	CuSn	•	•	•	•
PTFE <i>Single insulation</i>	250	CuNi	•	•	•	•
PTFE+PTFE <i>Double insulation</i>	250	CuNi	•	•	•	•
PTFE+PFA <i>Double insulation</i>	250	CuNi		•	•	
PTFE+PFA+PFA <i>Triple insulation</i>	250	CuNi		•		
PFA <i>Single insulation</i>	260	CuNi	•	•	•	
PFA+PFA <i>Double insulation</i>	260	CuNi	•	•		



A01



A01P

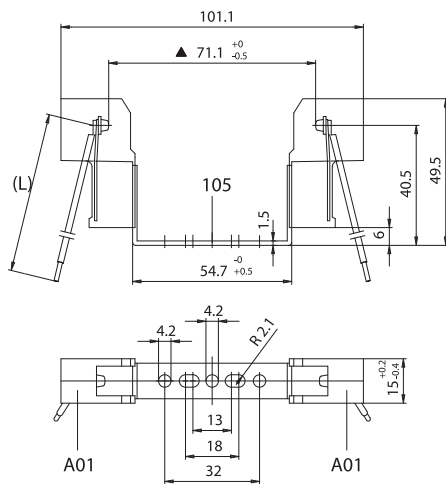
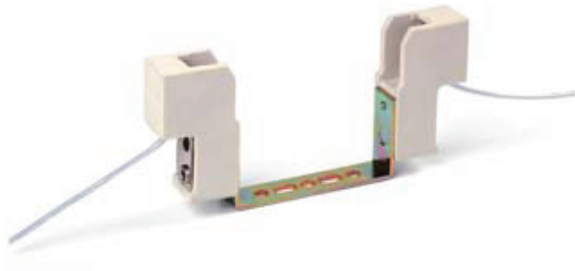


A01F

• 503 - Self-threading screw M3 x 8 (other lengths on request)



A02

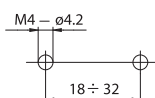
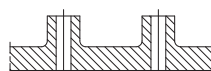


▲ Dimension without inserted lamp in the lampholder

A02: A01 lampholders assembled with spacer bracket in zinc-plated iron for R7s cap, with "Z nom." lamp 74,9 mm art. 105.

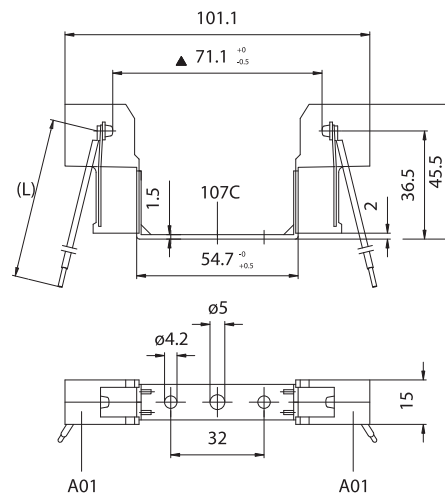
A02P: version with lampholders equipped with protection in LCP which covers the pressure springs (see A01P).

- Weight of the lampholder in standard execution: 60 g.
- Indications to fix the lampholder on structures.



- Fixing of the lampholder by M4 screws to be inserted in the holes of the bracket, placed on two supports with a center distance of 18 ÷ 32 mm.

A04C

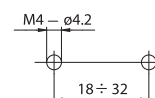


▲ Dimension without inserted lamp in the lampholder

A04C: A01 lampholders assembled with spacer bracket in zinc-plated iron for R7s cap, with "Z nom." lamp 74,9 mm art. 107C.

A04CP: version with lampholders equipped with protection in LCP which covers the pressure springs (see A01P).

- Weight of the lampholder in standard execution: 60 g.
- Indications to fix the lampholder on structures.

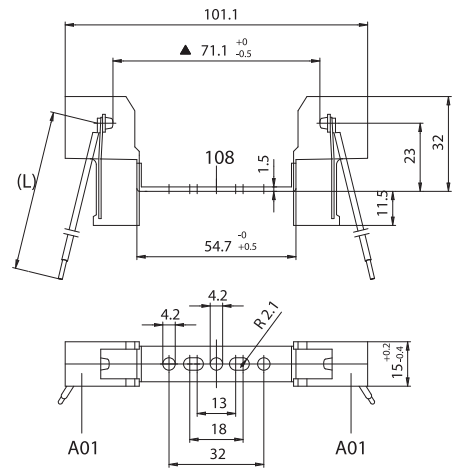
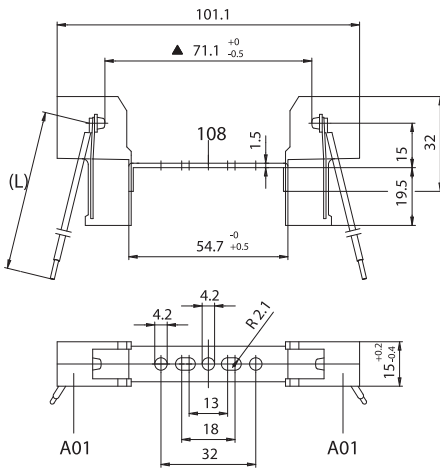
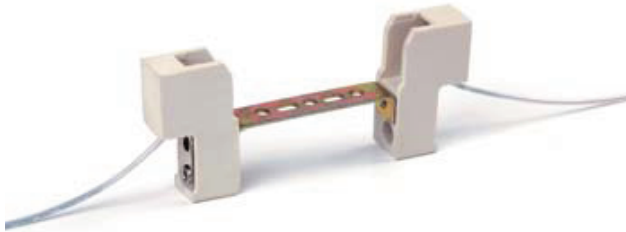


- Fixing of the lampholder by M4 screws to be inserted in the holes of the bracket, placed on two supports with a center distance of 18 ÷ 32 mm.

A05



A05U



▲ Dimension without inserted lamp in the lampholder

▲ Dimension without inserted lamp in the lampholder

A05: A01 lampholders assembled with spacer bracket in zinc-plated iron for R7s cap, with "Z nom." lamp 74,9 mm art. 108.

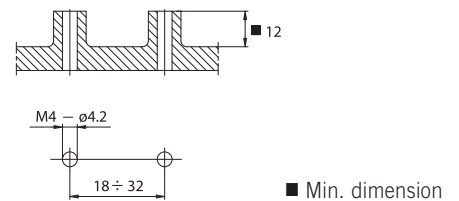
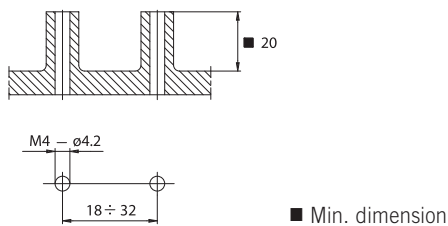
A05U: A01 lampholders assembled with spacer bracket in zinc-plated iron for R7s cap, with "Z nom." lamp 74,9 mm art. 108.

A05P: version with lampholders equipped with protection in LCP which covers the pressure springs (see A01P).

A05UP: version with lampholders equipped with protection in LCP which covers the pressure springs (see A01P).

- Weight of the lampholder in standard execution: 55 g.
- Indications to fix the lampholder on structures.

- Weight of the lampholder in standard execution: 55 g.
- Indications to fix the lampholder on structures.



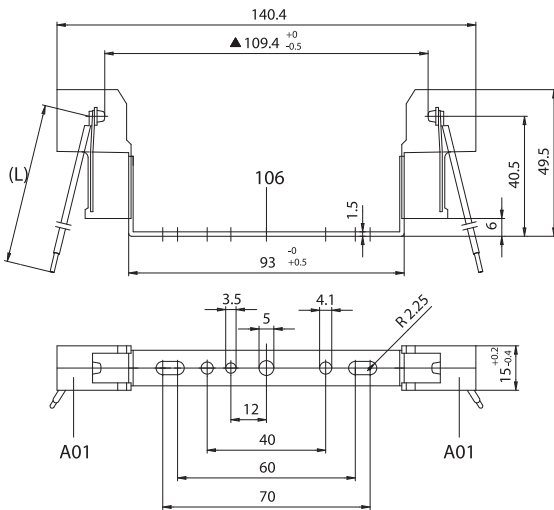
- Fixing of the lampholder by M4 screws to be inserted in the holes of the bracket, placed on two supports with a center distance of 18÷32 mm.

- Fixing of the lampholder by M4 screws to be inserted in the holes of the bracket, placed on two supports with a center distance of 18÷32 mm.

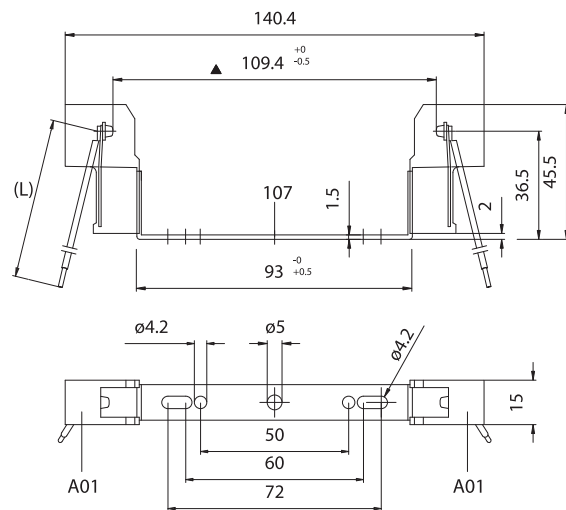
A03



A04



▲ Dimension without inserted lamp in the lampholder



▲ Dimension without inserted lamp in the lampholder

A03: A01 lampholders assembled with spacer bracket in zinc-plated iron for R7s cap, with "Z nom." lamp 114,2 mm art. 106.

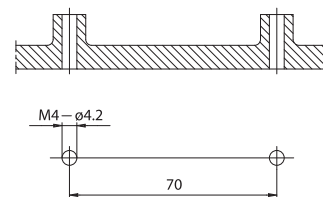
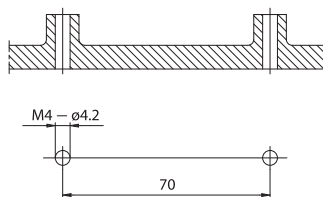
A04: A01 lampholders assembled with spacer bracket in zinc-plated iron for R7s cap, with "Z nom." lamp 114,2 mm art 107.

A03P: version with lampholders equipped with protection in LCP which covers the pressure springs (see A01P).

A04P: version with lampholders equipped with protection in LCP which covers the pressure springs (see A01P).

- Weight of the lampholder in standard execution: 65 g.
- Indications to fix the lampholder on structures.

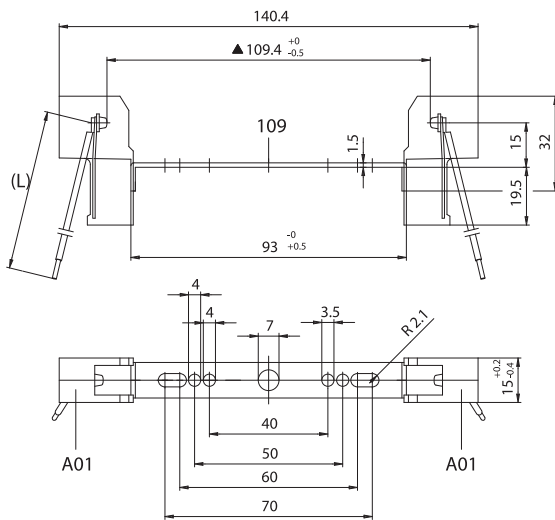
- Weight of the lampholder in standard execution: 65 g.
- Indications to fix the lampholder on structures.



- Fixing of the lampholder by M4 screws to be inserted in the holes of the bracket, placed on two supports with a center distance of 70 mm.

- Fixing of the lampholder by M4 screws to be inserted in the holes of the bracket, placed on two supports with a center distance of 70 mm.

A06

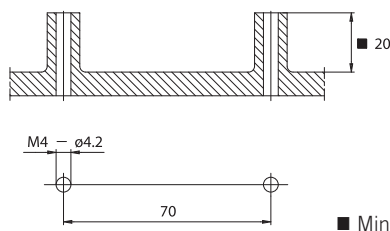


▲ Dimension without inserted lamp in the lampholder

A06: A01 lampholders assembled with spacer bracket in zinc-plated iron for R7s cap, with "Z nom." lamp 114,2 mm art. 109.

A06P: version with lampholders equipped with protection in LCP which covers the pressure springs (see A01P).

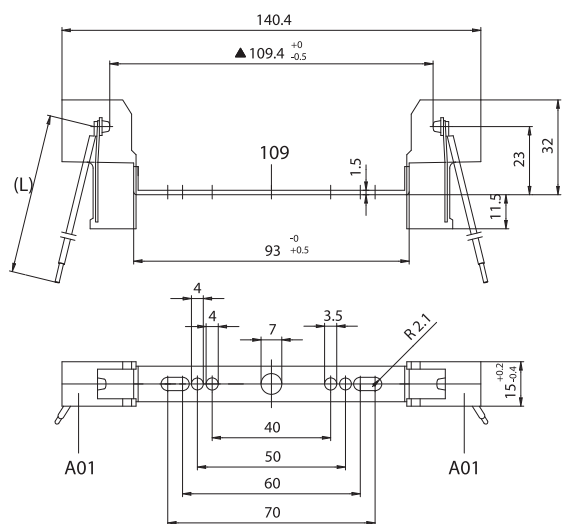
- Weight of the lampholder in standard execution: 60 g.
- Indications to fix the lampholder on structures.



■ Min. dimension

- Fixing of the lampholder by M4 screws to be inserted in the holes of the bracket, placed on two supports with a center distance of 70 mm.

A06U

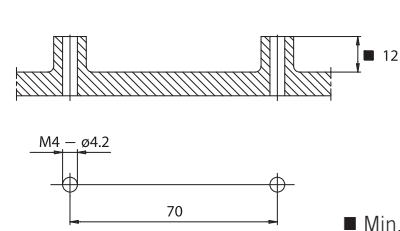


▲ Dimension without inserted lamp in the lampholder

A06U: A01 lampholders assembled with spacer bracket in zinc-plated iron for R7s cap, with "Z nom." lamp 114,2 mm art. 109.

A06UP: version with lampholders equipped with protection in LCP which covers the pressure springs (see A01P).

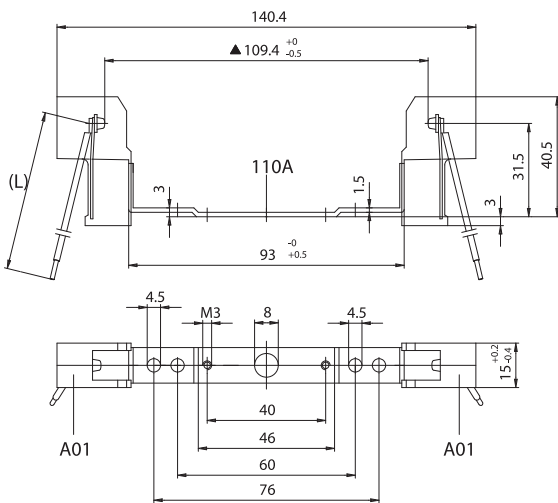
- Weight of the lampholder in standard execution: 60 g.
- Instructions to fix the lampholder on structures.



■ Min. dimension

- Fixing of the lampholder by M4 screws to be inserted in the holes of the bracket, placed on two supports with a center distance of 70 mm.

A07

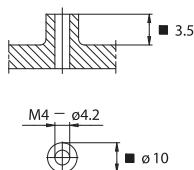


▲ Dimension without inserted lamp in the lampholder

A07: A01 lampholders assembled with spacer bracket in zinc-plated iron for R7s cap, with "Z nom." lamp 114,2 mm art. 110A.

A07P: version with lampholders equipped with protection in LCP which covers the pressure springs (see A01P).

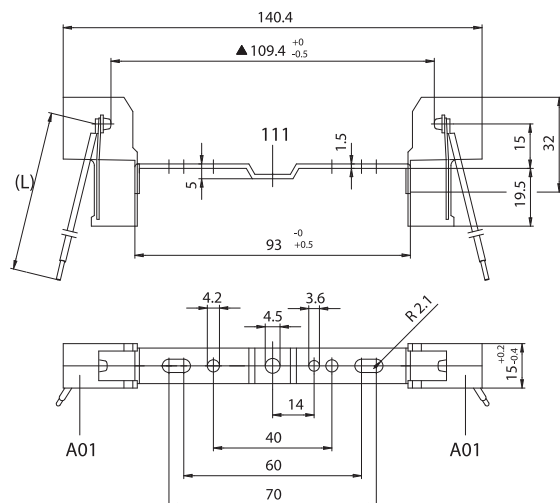
- Weight of the lampholder in standard execution: 65 g.
- Indications to fix the lampholder on structures.



■ Min. dimension

- Fixing of the lampholder by M4 screws (with head with minimum diameter 8 mm) to be inserted in the central hole of the bracket, placed on a support.

A08

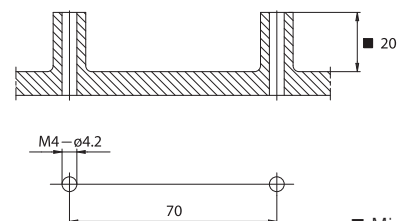


▲ Dimension without inserted lamp in the lampholder

A08: A01 lampholders assembled with spacer bracket in zinc-plated iron for R7s cap, with "Z nom." lamp 114,2 mm art. 111.

A08P: version with lampholders equipped with protection in LCP which covers the pressure springs (see A01P).

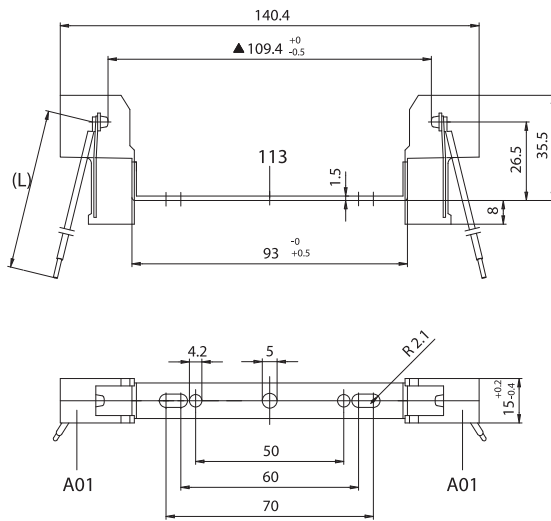
- Weight of the lampholder in standard execution: 60 g.
- Indications to fix the lampholder on structures.



■ Min. dimension

- Fixing of the lampholder by M4 screws to be inserted in the holes of the bracket, placed on two supports with a center distance of 70 mm.

A09

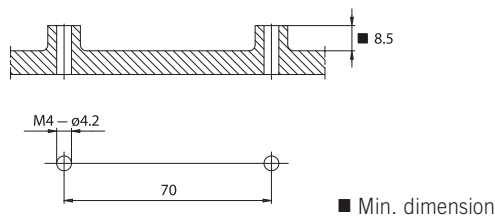


▲ Dimension without inserted lamp in the lampholder

A09: A01 lampholders assembled with spacer bracket in zinc-plated iron for R7s cap, with “Z nom.” lamp 114,2 mm art. 113.

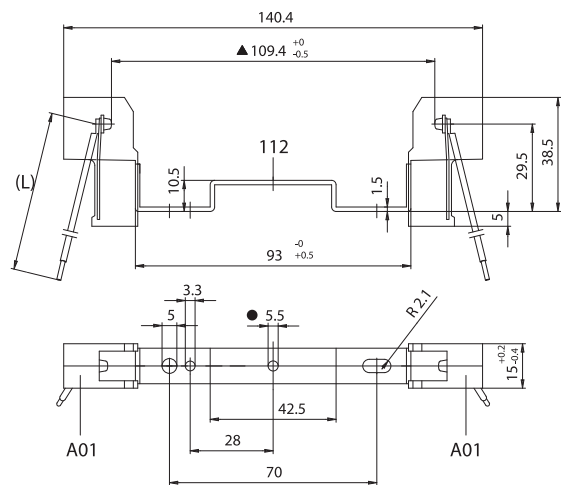
A09P: version with lampholders equipped with protection in LCP which covers the pressure springs (see A01P).

- Weight of the lampholder in standard execution: 60 g.
- Indications to fix the lampholder on structures.



- Fixing of the lampholder by M4 screws to be inserted in the holes of the bracket, placed on two supports with a center distance of 70 mm.

AB8



▲ Dimension without inserted lamp in the lampholder

AB8: A01 lampholders assembled with spacer bracket in zinc-plated iron for R7s cap, with “Z nom.” lamp 114,2 mm with central hole diameter 5,5 mm art. 112.

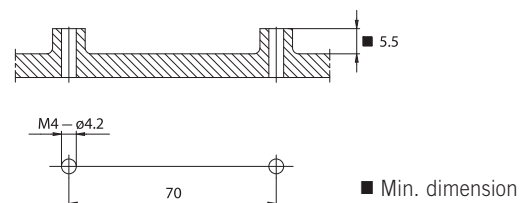
AB8P: version with lampholders equipped with protection in LCP which covers the pressure springs (see A01P).

AB8A - AB8AP: ● with central hole diameter 3,4 mm.

AB8B - AB8BP: ● with central hole M4.

AB8C - AB8CP: ● with central hole diameter 4,5 mm.

- Weight of the lampholder in standard execution: 65 g.
- Indications to fix the lampholder on structures.



- Fixing of the lampholder by M4 screw (with head min. diameter 8 mm) to be inserted in the central fixing hole of the bracket, placed on a support.