

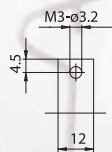
LAMPHOLDERS FOR DISCHARGE LAMPS

Attention: the back side of this lampholder has uncovered parts under tension. During the project verify that the surface and air distance, prescribed by lighting fixtures construction standards, will be respected. Verify also the protection against accidental contacts.

Note: the version A01P, lampholder equipped with protection device in LCP, grants the protection against electrical shocks caused by accidental contacts with the back side of the lampholder.

A01F, lampholder with micarta plate positioned between the contacts and the pressure spring. The insulation plate grants the protection against the electric shock with the standardized IEC 529 test-finger in the contact area lamp-lampholder, with inserted lamp. **PATENTED**

- Steatite body.
Contacts in electrolytic copper and silver.
Pressure spring in nickel-plated, hardened and normalized, steel.
Self-threading fixing screws M3.
- Weight of the lampholders pair in standard execution (with 25 cm of cables): 50 g.
- D: fixing distance of the lampholders pair on rigid structures:
 - 94,0 mm for lamps with RX7s cap, with "Z nom." lamp 114,2 mm (70W)
 - 111,8 mm for lamps with RX7s cap, with "Z nom." lamp 132,0 mm (150W)
- d: distance between contacts = D + 16,4 mm
- Indications to fix the lampholder on structures.



- Fixing of the lampholders pair by M3 self-threading screws inserted in the bodies. Standard screw M3 x 8 with cross head. Other lengths on request (minimum length for threaded supports: 6 mm).

A01H



Lampholder:

RX7s

Maximum power:
Rated voltage:
Impulse voltage:
Working temperature:
Connected cables
working temperature:
In conformity to the standards:

1500 W
250 V
5 kV
T 250°C
T 105°÷ 250°C
UL 496
CSA 22.2 N.43

Approval marks:

cURus

Single-conductor flexible connecting cables, polarized black and white, crimped to the lampholder:

Insulation	T in °C	Conduct.	Available voltages and AWG	
			600V	18AWG
Silicone Single insulation	200	CuSn	•	•
Silicone+glass-braid Single insulation	200	CuSn	•	•
PTFE Single insulation	250	CuNi	•	•
PTFE+PFA Double insulation	250	CuNi	•	•



A01H

1984-1998



Lampholder:

Rated voltage:
Impulse voltage:
Rated current:
Working temperature:
Connected cables
working temperature:
Overvoltage category:
Protection degree (IP):
In conformity to the standards:
In conformity to the requirements
of the directive:

RX7s

500 V
5 kV
6 A
T 300°C

T 105°÷ 250°C
III
IP00
CEI EN 60838-1

2014/35/EU

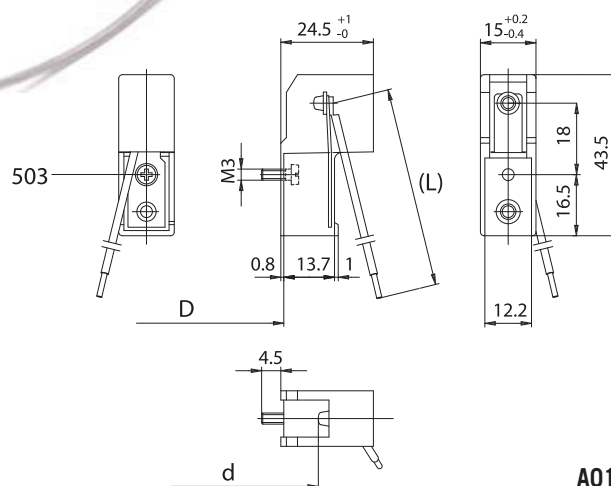
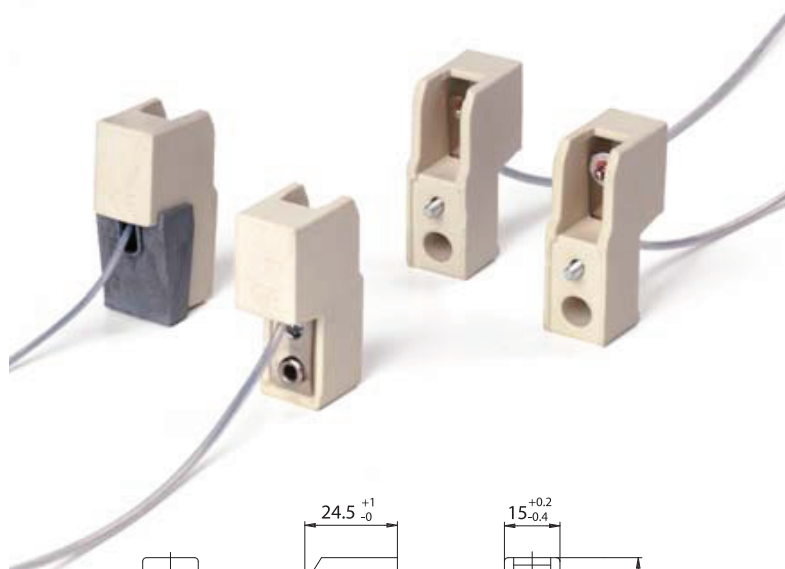
Approval marks:

A01HP: A01H lampholder equipped with protection device in LCP T250°C (T240°C for UL), which covers the back pressure springs.

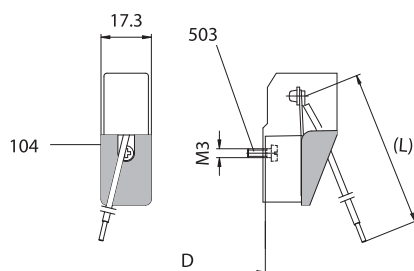
A01HF: A01H lampholder with micarta plate positioned between the contacts and the pressure springs.

Single-conductor flexible connecting cables crimped to the lampholder:

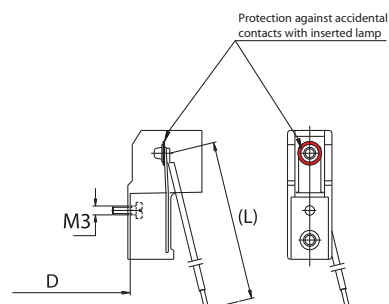
Insulation	T in °C	Conduct.	Available sections and tensions			
			Pulse kV	0,75 mm ²	1,00 mm ²	1,50 mm ²
Oversize silicone <i>Single insulation</i>	180	CuSn	10kV		•	
Oversize silicone <i>Single insulation</i>	180	CuSn	5kV	•	•	
Silicone+Silicone <i>Single insulation</i>	180	CuSn	5kV	•	•	
Oversize PTFE <i>Single insulation</i>	250	CuNi	5kV		•	
Oversize PTFE +PFA <i>Double insulation</i>	250	CuNi	5kV		•	



A01H



A01HP



A01HF

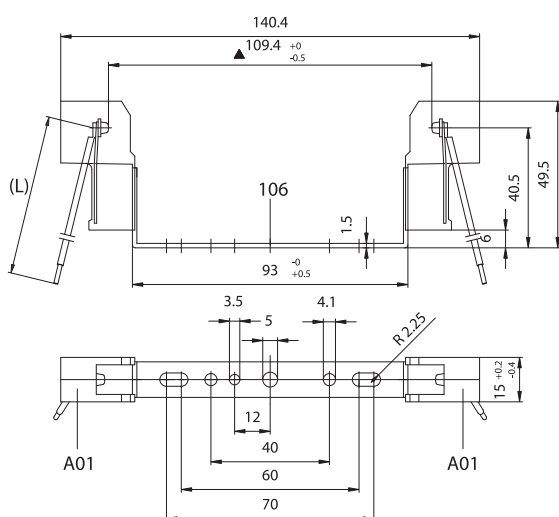
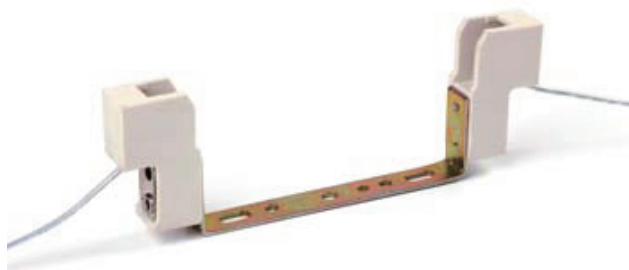
- 503 - Self-threading screw M3 x 8 (other lengths on request)



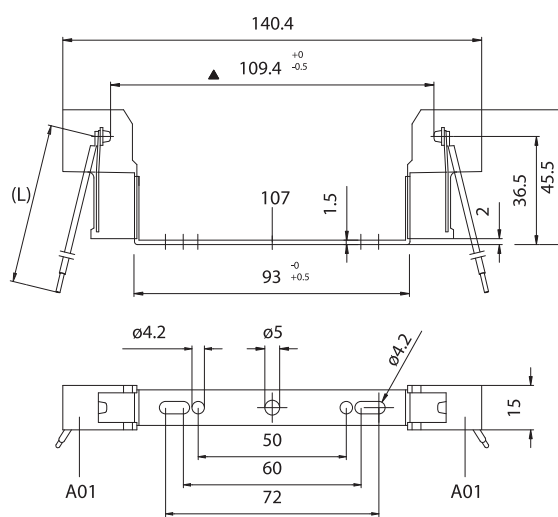
A03H



A04H



▲ Dimension without inserted lamp in the lampholder



▲ Dimension without inserted lamp in the lampholder

A03H: A01H lampholders assembled with spacer bracket in zinc-plated iron for RX7s cap, with “Z nom.” lamp 114,2 mm (70W) art. 106.

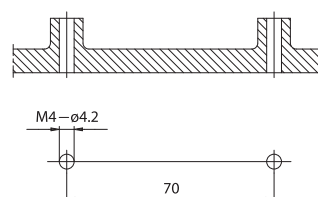
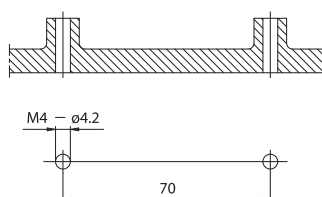
A04H: A01H lampholders assembled with spacer bracket in zinc-plated iron for RX7s cap, with “Z nom.” lamp 114,2 mm (70W) art. 107.

A03HP: version with lampholders equipped with protection in LCP which covers the pressure springs (see A01HP).

A04HP: version with lampholders equipped with protection in LCP which covers the pressure springs (see A01HP).

- Weight of the lampholder in standard execution: 65 g.
- Instructions to fix the lampholder on structures.

- Weight of the lampholder in standard execution: 65 g.
- Instructions to fix the lampholder on structures.



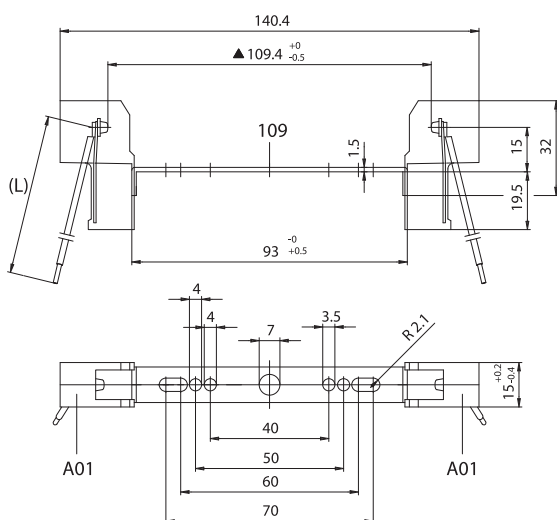
- Fixing of the lampholder by M4 screws to be inserted in the holes of the bracket, placed on two supports with a center distance of 70 mm.

- Fixing of the lampholder by M4 screws to be inserted in the holes of the bracket, placed on two supports with a center distance of 70 mm.

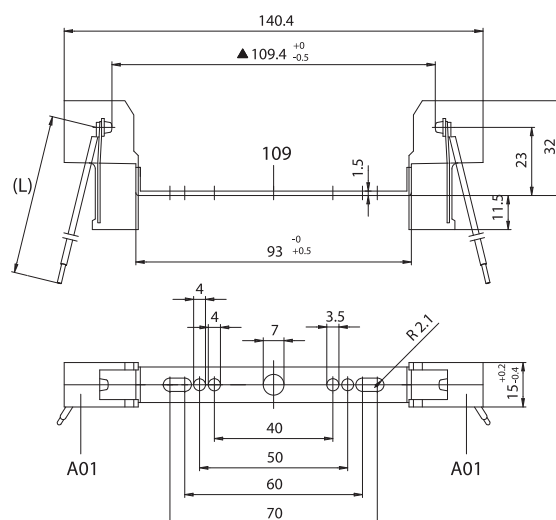
A06H



A06UH



▲ Dimension without inserted lamp in the lampholder



▲ Dimension without inserted lamp in the lampholder

A06H: A01H lampholders assembled with spacer bracket in zinc-plated iron for RX7s cap, with "Z nom." lamp 114,2 mm (70W) art. 109.

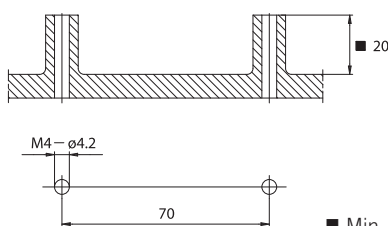
A06UH: A01H lampholders assembled with spacer bracket in zinc-plated iron for RX7s cap, with "Z nom." lamp 114,2 mm (70W) art. 109.

A06HP: version with lampholders equipped with protection in LCP which covers the pressure springs (see A01HP).

A06UHP: version with lampholders equipped with protection in LCP which covers the pressure springs (see A01HP).

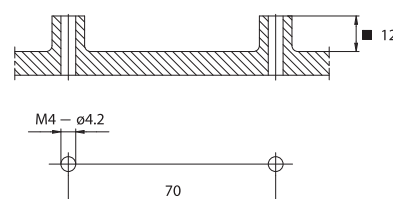
- Weight of the lampholder in standard execution: 60 g.
- Instructions to fix the lampholder on structures.

- Weight of the lampholder in standard execution: 60 g.
- Instructions to fix the lampholder on structures.



■ Min. dimension

- Fixing of the lampholder by M4 screws to be inserted in the holes of the bracket, placed on two supports with a center distance of 70 mm.



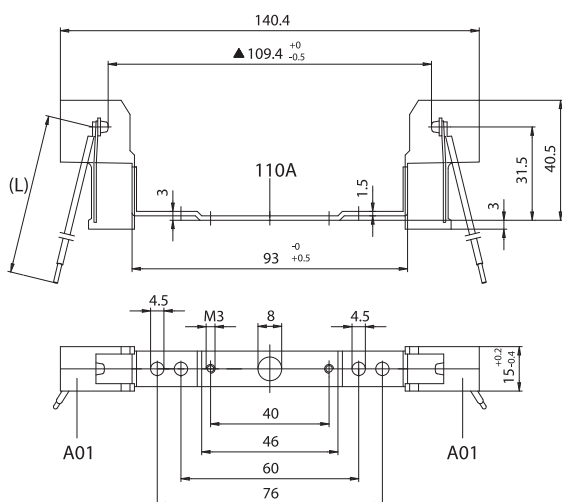
■ Min. dimension

- Fixing of the lampholder by M4 screws to be inserted in the holes of the bracket, placed on two supports with a center distance of 70 mm.

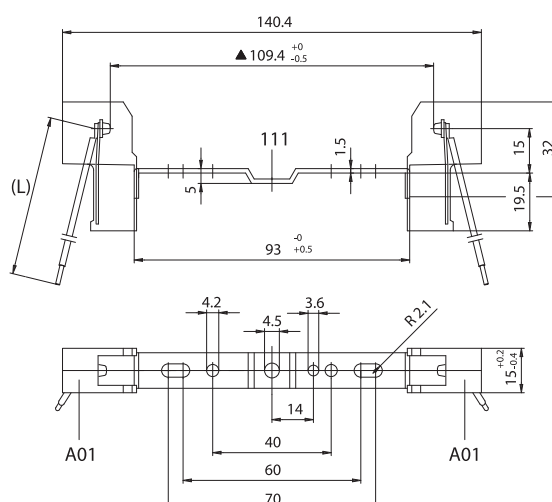
A07H



A08H



▲ Dimension without inserted lamp in the lampholder



▲ Dimension without inserted lamp in the lampholder

A07H: A01H lampholders assembled with spacer bracket in zinc-plated iron for RX7s cap, with "Z nom." lamp 114,2 mm (70W) art. 110A.

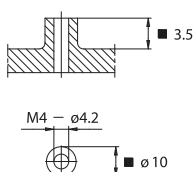
A08H: A01H lampholders assembled with spacer bracket in zinc-plated iron for RX7s cap, with "Z nom." lamp 114,2 mm (70W) art. 111.

A07HP: version with lampholders equipped with protection in LCP which covers the pressure springs (see A01HP).

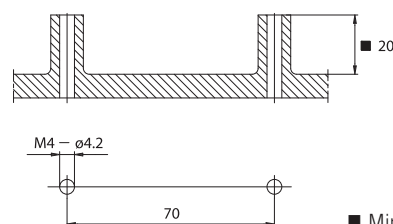
A08HP: version with lampholders equipped with protection in LCP which covers the pressure springs (see A01HP).

- Weight of the lampholder in standard execution: 65 g.
- Instructions to fix the lampholder on structures.

- Weight of the lampholder in standard execution: 60 g.
- Instructions to fix the lampholder on structures.



■ Min. dimension

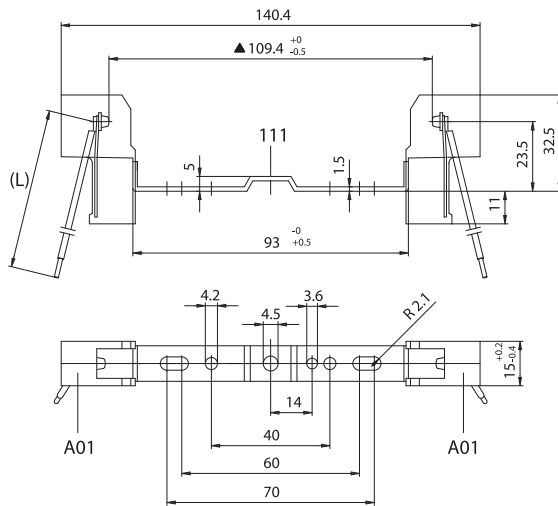


■ Min. dimension

- Fixing of the lampholder by M4 screws (with head with minimum diameter 8 mm) to be inserted in the central hole of the bracket, placed on a support.

- Fixing of the lampholder by M4 screws to be inserted in the holes of the bracket, placed on two supports with a center distance of 70 mm.

A08UH

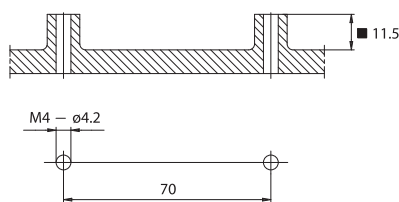


▲ Dimension without inserted lamp in the lampholder

A08UH: A01H lampholders assembled with spacer bracket in zinc-plated iron for RX7s cap, with "Z nom." lamp 114,2 mm (70W) art. 111.

A08UHP: version with lampholders equipped with protection in LCP which covers the pressure springs (see A01HP).

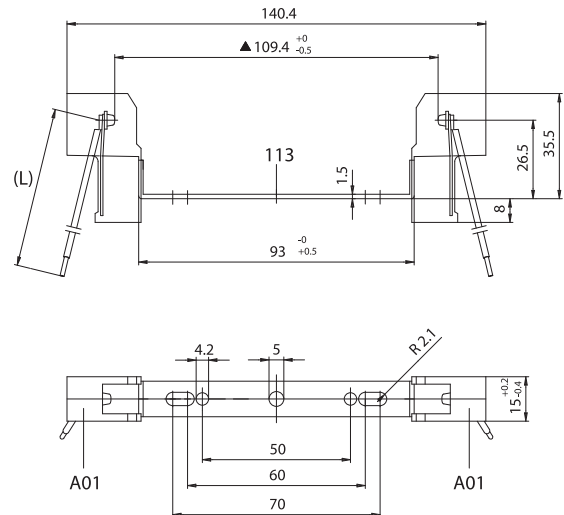
- Weight of the lampholder in standard execution: 60 g.
- Instructions to fix the lampholder on structures.



■ Min. dimension

- Fixing of the lampholder by M4 screws to be inserted in the holes of the bracket, placed on two supports with a center distance of 70 mm.

A09H

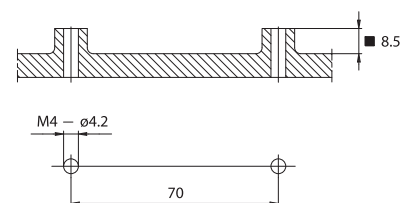


▲ Dimension without inserted lamp in the lampholder

A09H: A01H lampholders assembled with spacer bracket in zinc-plated iron for RX7s cap, with "Z nom." lamp 114,2 mm (70W) art. 113.

A09HP: version with lampholders equipped with protection in LCP which covers the pressure springs (see A01HP).

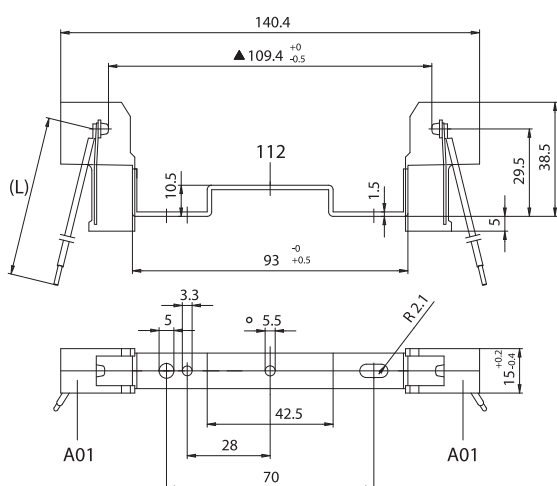
- Weight of the lampholder in standard execution: 60 g.
- Instructions to fix the lampholder on structures.



■ Min. dimension

- Fixing of the lampholder by M4 screws to be inserted in the holes of the bracket, placed on two supports with a center distance of 70 mm.

AB8H



▲ Dimension without inserted lamp in the lampholder

AB8H: A01H lampholders assembled with spacer bracket in zinc-plated iron for RX7s cap, with “Z nom.” lamp 114,2 mm (70W) with central hole diameter 5,5 mm art. 112.

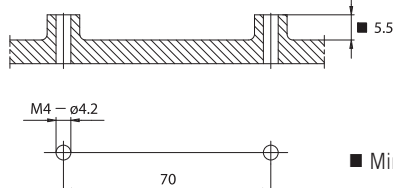
AB8HP: version with lampholders equipped with protection in LCP which covers the pressure springs (see A01HP).

AB8HA - AB8HAP: ● with central hole diameter 3.4 mm

AB8HB - AB8HBP: ● with central hole M4

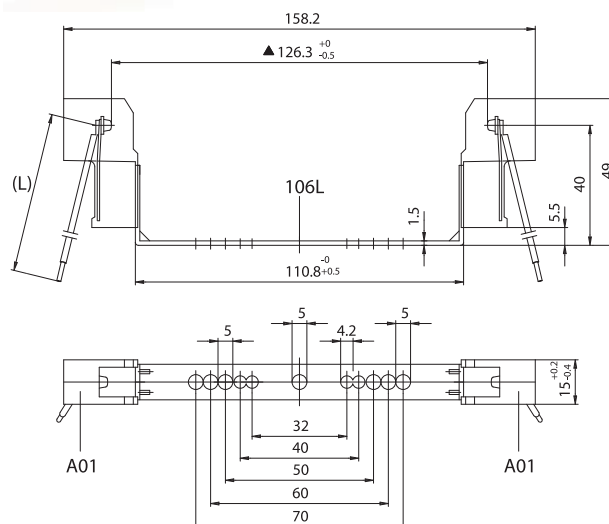
AB8HC - AB8HCP: ● with central hole diameter 4,5 mm

- Weight of the lampholder in standard execution: 65 g.
- Instructions to fix the lampholder on structures.



- Fixing of the lampholder by M4 screw (with head min. diameter 8 mm) to be inserted in the central fixing hole of the bracket, placed on a support.

A03LH



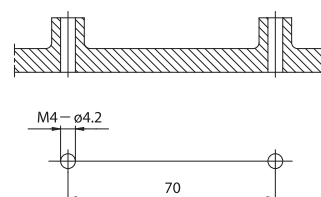
▲ Dimension without inserted lamp in the lampholder

A03LH: A01H lampholders assembled with spacer bracket in zinc-plated iron for RX7s cap, with "Z nom." lamp 132.0 mm (150W) art. 106L.

- Weight of the lampholder in standard execution: 75 g.

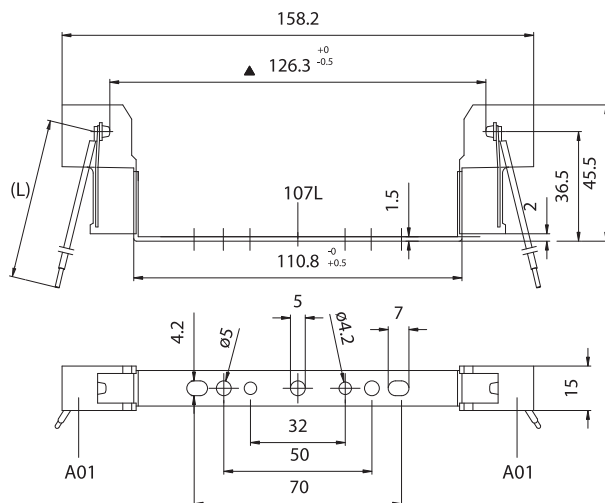
A03LHP: version with lampholders equipped with protection in LCP which covers the pressure springs (see A01HP).

- Instructions to fix the lampholder on structures.



- Fixing of the lampholder by M4 screws to be inserted in the holes of the bracket, placed on two supports with a center distance of 70 mm.

A04LH

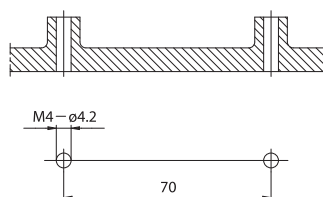


▲ Dimension without inserted lamp in the lampholder

A04LH: A01H lampholders assembled with spacer bracket in zinc-plated iron for RX7s cap, with "Z nom." lamp 132,0 mm (150W) art. 107L.

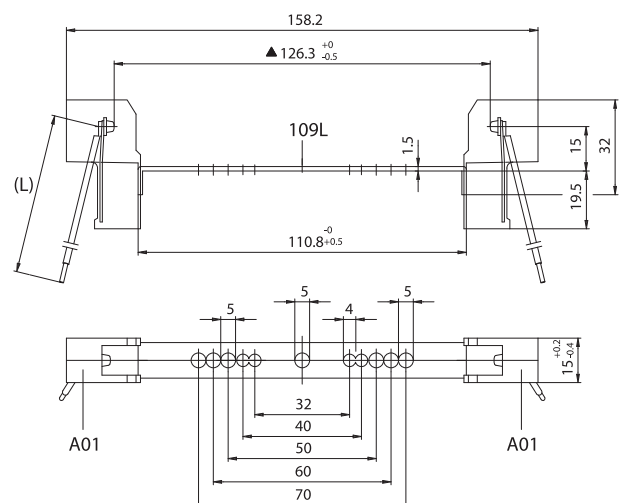
A04LHP: version with lampholders equipped with protection in LCP which covers the pressure springs (see A01HP).

- Weight of the lampholder in standard execution: 70 g.
- Instructions to fix the lampholder on structures.



- Fixing of the lampholder by M4 screws to be inserted in the holes of the bracket, placed on two supports with a center distance of 70 mm.

A06LH

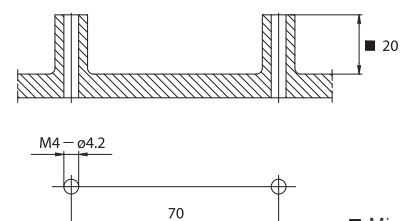


▲ Dimension without inserted lamp in the lampholder

A06LH: A01H lampholders assembled with spacer bracket in zinc-plated iron for RX7s cap, with "Z nom." lamp 132,0 mm (150W) art. 109L.

A06LHP: version with lampholders equipped with protection in LCP which covers the pressure springs (see A01HP).

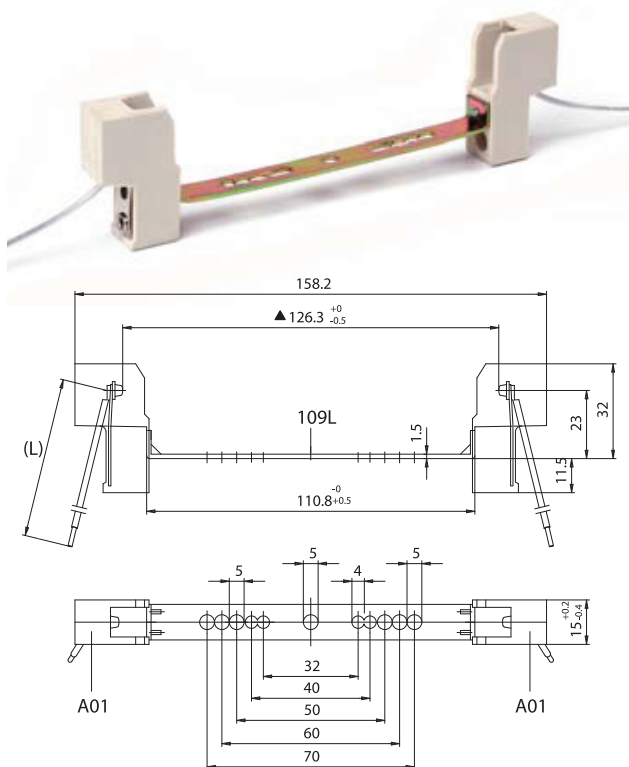
- Weight of the lampholder in standard execution: 65 g.
- Instructions to fix the lampholder on structures.



■ Min. dimension

- Fixing of the lampholder by M4 screws to be inserted in the holes of the bracket, placed on two supports with a center distance of 70 mm.

A06LUH

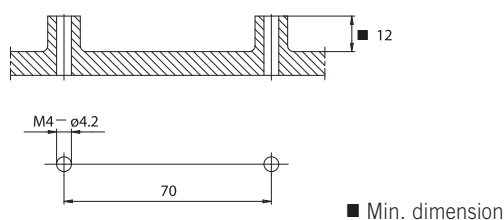


▲ Dimension without inserted lamp in the lampholder

A06LUH: A01H lampholders assembled with spacer bracket in zinc-plated iron for RX7s cap, with "Z nom." lamp 132,0 mm (150W) art. 109L.

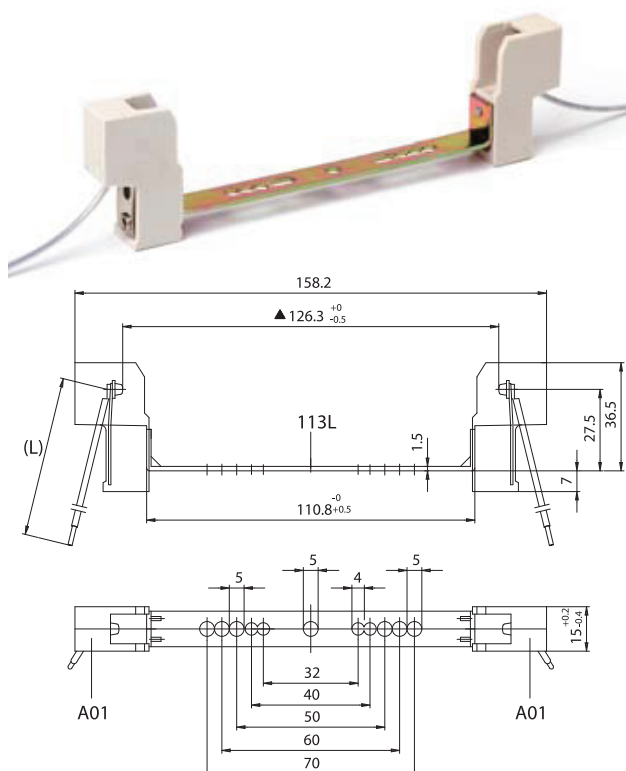
A06LUHP: version with lampholders equipped with protection in LCP which covers the pressure springs (see A01HP).

- Weight of the lampholder in standard execution: 65 g.
- Instructions to fix the lampholder on structures.



- Fixing of the lampholder by M4 screws to be inserted in the holes of the bracket, placed on two supports with a center distance of 70 mm.

A09LH

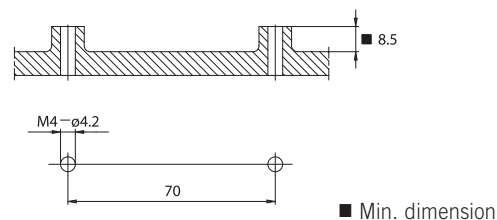


▲ Dimension without inserted lamp in the lampholder

A09LH: A01H lampholders assembled with spacer bracket in zinc-plated iron for RX7s cap, with "Z nom." lamp 132,0 mm (150W) art. 113L.

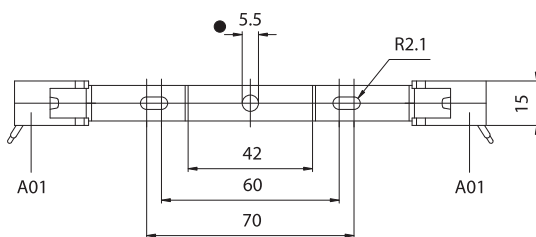
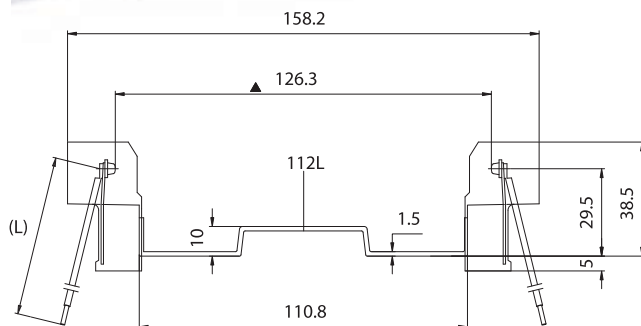
A09LHP: version with lampholders equipped with protection in LCP which covers the pressure springs (see A01HP).

- Weight of the lampholder in standard execution: 65 g.
- Instructions to fix the lampholder on structures.



- Fixing of the lampholder by M4 screws to be inserted in the holes of the bracket, placed on two supports with a center distance of 70 mm.

AB8LH



▲ Dimension without inserted lamp in the lampholder

AB8LH: A01H lampholders assembled with spacer bracket in zinc-plated iron for RX7s cap, with "Z nom." lamp 132,0 mm (150W) with central hole diameter 5,5 mm art. 112L.

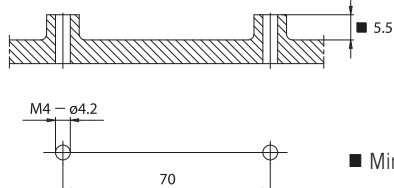
AB8LHP: version with lampholders equipped with protection in LCP which covers the pressure springs (see A01HP).

AB8LHA - AB8LHAP: ● with central hole diameter 3,4 mm

AB8LHB - AB8LHBP: ● with central hole M4

AB8LHC - AB8LHCP: ● with central hole diameter 4,5 mm

- Weight of the lampholder in standard execution: 70 g.
- Instructions to fix the lampholder on structures.



- Fixing of the lampholder by M4 screw (with head min. diameter 8 mm) to be inserted in the central fixing hole of the bracket, placed on a support.