

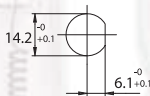
# LAMP HOLDERS FOR INCANDESCENT HALOGEN LAMPS

## A10



**Lampholder whose creepage and clearance distances allow the use in class II fixtures with working voltage up to 250V, if connected with double or triple insulated cables (ref. standard EN 60598.1).**

- Steatite body.  
Nickel-plated brass envelope, diameter 18 mm, with thread M14 x1, length 6 mm.  
Contacts in special nickel-plated alloy.  
Pressure springs in normalized stainless steel.  
Fixing nuts M14 x1, hexagonal 17, in nickel-plated brass.
- Weight of the lampholders pair in standard execution (with cables L= 25 cm): 40 g.
- D: fixing distance of the lampholders pair on rigid structures:
  - 103,4 mm for lamps with R7s cap, with "Z nom." lamp 74,9 mm
  - 142,7 mm for lamps with R7s cap, with "Z nom." lamp 114,2 mm
- d: distance between the contacts = D - 31,1 mm
- Indications to fix the lampholder on structures.



- Fixing of lampholders pair by thread M14 x1 on the lampholder external envelope. The standard supply includes the 17 mm hexagonal nuts in nickel-plated brass M14 x1.  
The threaded part of the brass external envelope has a lateral milling, in order to avoid the wrong assembling of the lampholders pair.

### Lampholder:

Maximum power:  
Rated voltage:  
Working temperature:  
Connected cables  
working temperature:  
In conformity to the standards:

R7s

**1500 W**  
**250 V**  
**T 250°C**  
**T 105÷ 250°C**  
**UL 496**  
**CSA 22.2 N.43**

Approval marks:

**cURus**

**A10M:** the lampholder, in the version cURus, may be supplied with a device that blocks the sliding of the lampholder body connected to the line (black colour polarized cable).

Single-conductor flexible connecting cables, polarized black and white, crimped to the lampholder:

Insulation	T in °C	Conduct.	Available voltages and AWG		
			300V	600V	18AWG
Silicone <i>Single insulation</i>	200	CuSn		•	•
Silicone+glass-braid <i>Single insulation</i>	200	CuSn		•	•
FEP <i>Single insulation</i>	200	CuNi	•	•	•
FEP+FEP <i>Double insulation</i>	200	CuNi	•		•
PTFE <i>Single insulation</i>	250	CuNi	•	•	•
PTFE+PFA <i>Double insulation</i>	250	CuNi	•		•



# FOR NET TENSION 110 - 250V

## A10

1984



**Lampholder:** R7s

Rated voltage: **250 V**  
 Rated current: **6 A**  
 Working temperature: **T 300°C**  
 Connected cables working temperature: **T 105°÷ 250°C**  
 Overvoltage category: **III**  
 Protection degree (IP): **IP20**  
 In conformity to the standards: **EN 60838-1**  
 In conformity to the requirements of the directive: **2014/35/EU**

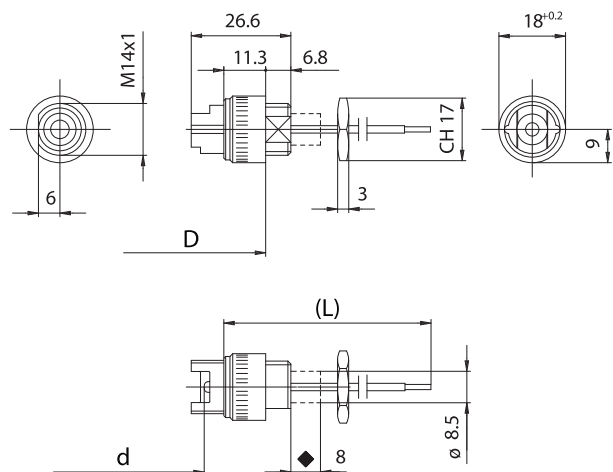
Approval marks: **ENEC 03**  
**CQC**



**Double insulation**

Single-conductor flexible connecting cables crimped to the lampholder:

Insulation	T in °C	Conduct.	Available sections in mm <sup>2</sup>			
			0,50	0,75	1,00	1,50
Silicone <i>Single insulation</i>	180	CuSn	•	•	•	•
Silicone+Silicone <i>Double insulation</i>	180	CuSn		•	•	
Silicone+glass-braid <i>Single insulation</i>	180	CuSn	•	•	•	•
FEP <i>Single insulation</i>	180	CuSn	•	•	•	•
FEP+FEP <i>Double insulation</i>	180	CuSn	•	•	•	•
FEP+FEP+FEP <i>Triple insulation</i>	180	CuSn	•	•		
PTFE <i>Single insulation</i>	180	CuSn	•	•	•	•
PTFE <i>Single insulation</i>	250	CuNi	•	•	•	•
PTFE+PTFE <i>Double insulation</i>	250	CuNi	•	•	•	
PTFE+PFA <i>Double insulation</i>	250	CuNi		•	•	
PTFE+PFA+PFA <i>Triple insulation</i>	250	CuNi		•		
PFA <i>Single insulation</i>	260	CuNi	•	•	•	
PFA+PFA <i>Double insulation</i>	260	CuNi	•	•	•	



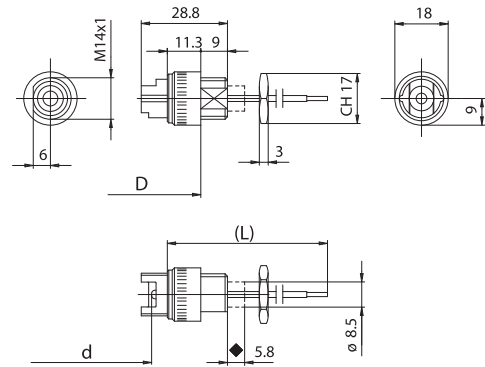
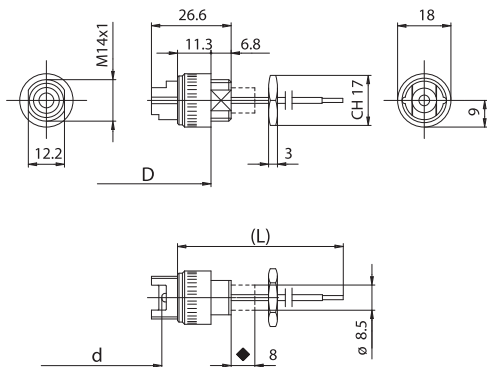
◆ Maximum jut of the steatite body during lamp insertion



# A10G



# A10L



◆ Maximum jut of the steatite body during lamp insertion

◆ Maximum jut of the steatite body during lamp insertion

**A10G:** lampholder as A10 with nickel-plated brass envelope diameter 18 mm with M14 x1 threading with two parallel millings, length 6 mm.

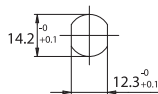
*ATTENTION: the brass envelope, in its threaded part, has a double lateral milling that may cause the wrong assembling of the lampholders pairs.*

**A10GM:** version UR, with device that blocks the lampholder body connected to the line (see A10M).

- D: fixing distance of the lampholders pairs on rigid structures:
  - 103,4 mm for lamps with R7s caps, with "Z nom." lamp 74,9 mm
  - 142,7 mm for lamps with R7s cap, with "Z nom." lamp 114,2 mm

• Weight of the lampholders pair in standard execution: 40 g.

• Indications to fix the lampholder on structures.



- Fixing of lampholders pair by thread M14 x1 on the lampholder external envelope. The standard supply includes the 17 mm hexagonal nuts in nickel-plated brass M14 x1.

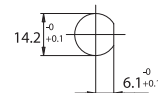
**A10L:** lampholder as A10 with nickel-plated brass envelope diameter 18 mm with M14 x1 threading, length 9 mm.

**A10LM:** version UR, with device that blocks the lampholder body connected to the line (see A10M).

- D: fixing distance of the lampholders pairs on rigid structures:
  - 103,4 mm for lamps with R7s caps, with "Z nom." lamp 74,9 mm
  - 142,7 mm for lamps with R7s cap, with "Z nom." lamp 114,2 mm

• Weight of the lampholders pair in standard execution: 40 g.

• Indications to fix the lampholder on structures.

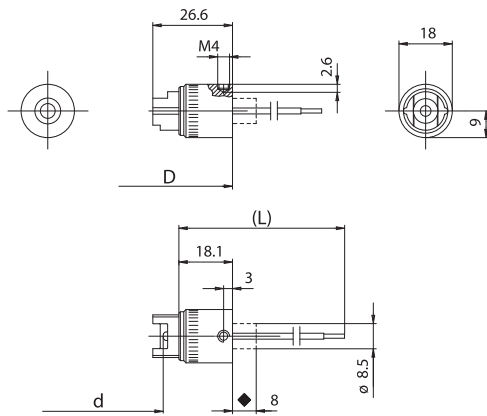


- Fixing of lampholders pair by thread M14 x1 on the lampholder external envelope. The standard supply includes the 17 mm hexagonal nuts in nickel-plated brass M14 x1. The threaded part of the brass external envelope has a lateral milling, in order to avoid the wrong assembling of the lampholders pair.

# A10F



Double insulation

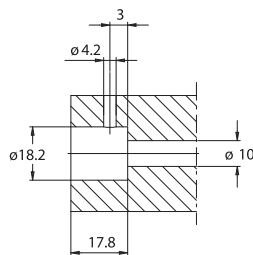


◆ Maximum jut of the steatite body during lamp insertion

**A10F:** lampholder as A10 with nickel-plated brass envelope with M4 lateral threading.

**A10FM:** version UR, with device that blocks the lampholder body connected to the line (see A10M).

- D: fixing distance of the lampholders pairs on rigid structures:
  - 117,0 mm for lamps with R7s cap, with "Z nom." lamp 74,9 mm
  - 156,3 mm for lamps with R7s cap, with "Z nom." lamp 114,2 mm
- Weight of the lampholders pair in standard execution: 45 g.
- Indications to fix the lampholder on structures.

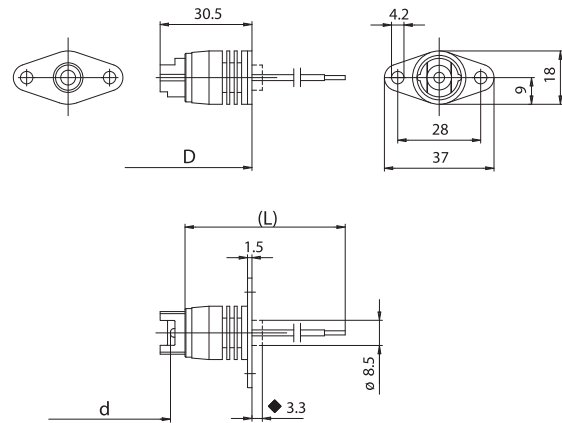


- Fixing system, of the lampholders pair, by insertion in cylindrical structures diameter 18,2 mm, in which the lampholders stability is granted screwing down M4 screws in fore-made threads of the envelope holes (see the drawing).

# A10A



Double insulation

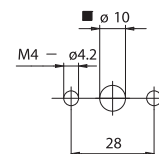


◆ Maximum jut of the steatite body during lamp insertion

**A10A:** lampholder as A10 with nickel-plated brass envelope with nickel-plated fixing plate.

**A10AM:** version UR, with device that blocks the lampholder body connected to the line (see A10M).

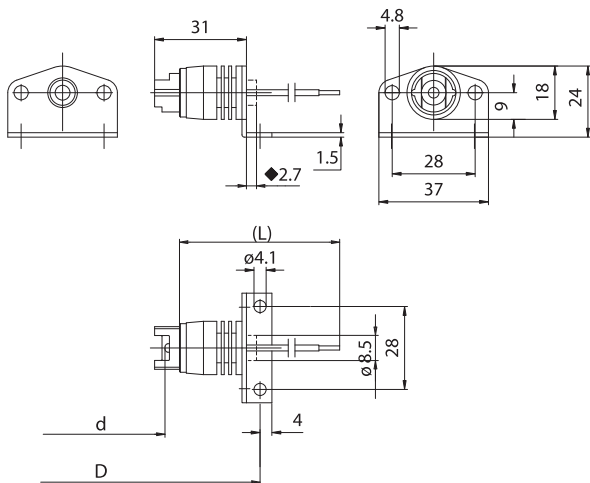
- D: fixing distance of the lampholders pairs on rigid structures:
  - 125,7 mm for lamps with R7s cap, with "Z nom." lamp 74,9 mm
  - 165,0 mm for lamps with R7s cap, with "Z nom." lamp 114,2 mm
- Indications to fix the lampholder on structures.



■ Insertion hole of the steatite body during lamp insertion

- Fixing of the lampholders pair by M4 screws to be inserted in holes with center distance 28 mm.

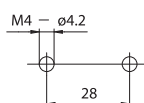
# A10B



◆ Maximum jut of the steatite body during lamp insertion

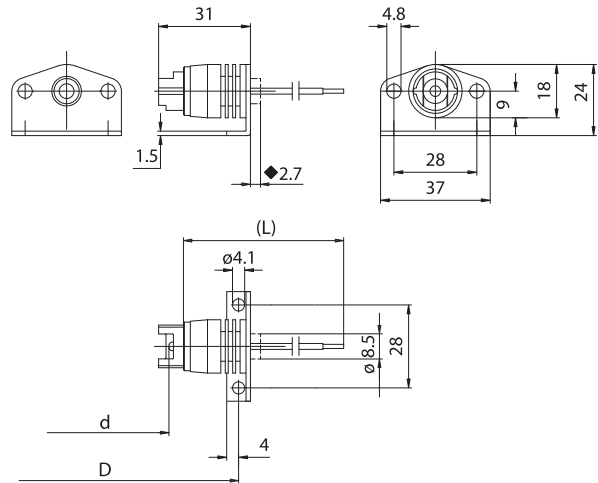
**A10B:** lampholder as A10 with nickel-plated fixing bracket turned towards the cables.

- D: fixing distance of the lampholders pairs on rigid structures:
  - 134,9 mm for lamps with R7s cap, with "Z nom." lamp 74,9 mm
  - 174,2 mm for lamps with cap R7s, with "Z nom." lamp 114,2 mm
- Weight of the lampholders pair in standard execution: 65 g.
- Indications to fix the lampholder on structures.



- Fixing of the lampholders pair by M4 screws to be inserted in holes with center distance 28 mm.

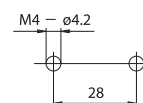
# A10C



◆ Maximum jut of the steatite body during lamp insertion

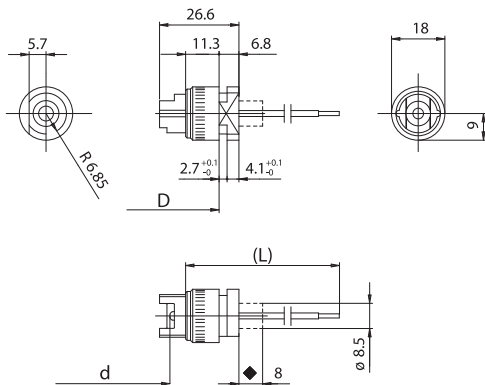
**A10C:** lampholder as A10 with nickel-plated fixing bracket turned towards the lamp.

- D: fixing distance of the lampholders pairs on rigid structures:
  - 113,7 for lamps with R7s cap, with "Z nom." lamp 74,9 mm
  - 173,2 mm for lamps with cap R7s, with "Z nom." lamp 114,2 mm
- Weight of the lampholders pair in standard execution: 65 g.
- Indications to fix the lampholder on structures.



- Fixing of the lampholders pair by M4 screws to be inserted in holes with center distance 28 mm.

# A10T

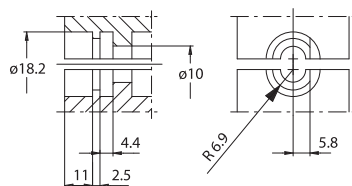


◆ Maximum jut of the steatite body during lamp insertion

**A10T:** lampholder as A10 with nickel-plated brass envelope with groove for coupling structures.

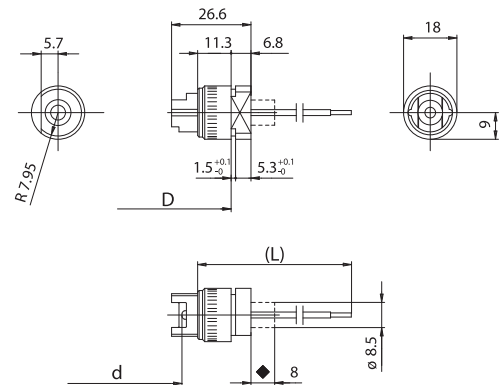
**A10TM:** version UR, with device that blocks the lampholder body connected to the line (see A10M).

- D: fixing distance of the lampholders pairs on rigid structures:
  - 103,4 mm for lamps with R7s cap, with "Z nom." lamp 74,9 mm
  - 142,7 mm for lamps with R7s cap, with "Z nom." lamp 114,2 mm
- Weight of the lampholders pair in standard execution: 40 g.
- Indications to fix the lampholder on structures.



- Fixing system of lampholders pair by coupling of two shells with opportune profiles, in such a way to avoid wrong assembling (see the drawing).

# A10P

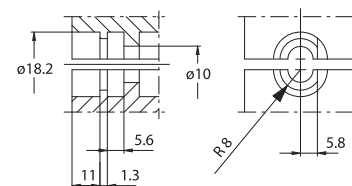


◆ Maximum jut of the steatite body during lamp insertion

**A10P:** lampholder as A10 with nickel-plated brass envelope with groove for coupling structures.

**A10PM:** version UR, with device that blocks the lampholder body connected to the line (see A10M).

- D: fixing distance of the lampholders pairs on rigid structures:
  - 103,4 mm for lamps with R7s cap, with "Z nom." lamp 74,9 mm
  - 142,7 mm for lamps with R7s cap, with "Z nom." lamp 114,2 mm
- Weight of the lampholders pair in standard execution: 40 g.
- Indications to fix the lampholder on structures.



- Fixing system of lampholders pair by coupling of two shells with opportune profiles, in such a way to avoid wrong assembling (see the drawing).

# A10Q



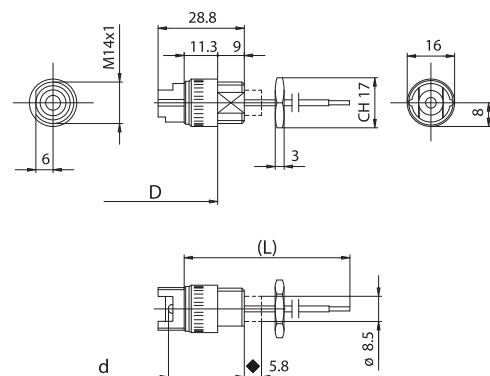
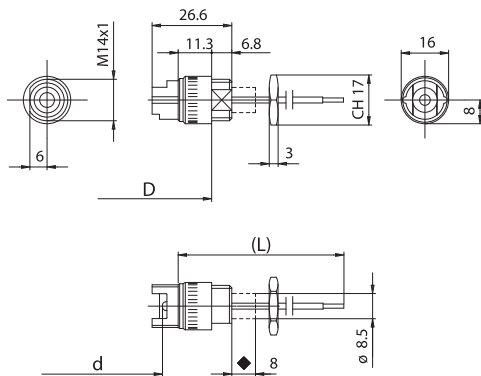
# A10V



Double insulation



Double insulation



◆ Maximum jut of the steatite body during lamp insertion

◆ Maximum jut of the steatite body during lamp insertion

**A10Q:** lampholder as A10 with nickel-plated brass envelope diameter 16 mm, with M14 x1 thread, length 6 mm.

**A10V:** lampholder as A10 with nickel-plated brass envelope diameter 16 mm, with M14 x1 thread, length 9 mm.

**A10QM:** version UR, with device that blocks the lampholder body connected to the line (see A10M).

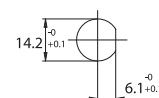
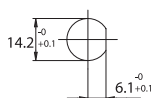
**A10VM:** version UR, with device that blocks the lampholder body connected to the line (see A10M).

- D: fixing distance of the lampholders pairs on rigid structures:
  - 103,4 mm for lamps with R7s cap, with "Z nom." lamp 74,9 mm
  - 142,7 mm for lamps with R7s cap, with "Z nom." lamp 114,2 mm

- D: fixing distance of the lampholders pairs on rigid structures:
  - 103,4 mm for lamps with R7s cap, with "Z nom." lamp 74,9 mm
  - 142,7 mm for lamps with R7s cap, with "Z nom." lamp 114,2 mm

- Weight of the lampholders pair in standard execution: 30 g.
- Indications to fix the lampholder on structures.

- Weight of the lampholders pair in standard execution: 30 g.
- Indications to fix the lampholder on structures.



- Fixing of lampholders pair by thread M14 x1 on the lampholder external envelope. The standard supply includes the 17 mm hexagonal nuts in nickel-plated brass M14 x1. The threaded part of the brass external envelope has a lateral milling, in order to avoid the wrong assembling of the lampholders pair.

- Fixing of lampholders pair by thread M14 x1 on the lampholder external envelope. The standard supply includes the 17 mm hexagonal nuts in nickel-plated brass M14 x1. The threaded part of the brass external envelope has a lateral milling, in order to avoid the wrong assembling of the lampholders pair.

# A10E



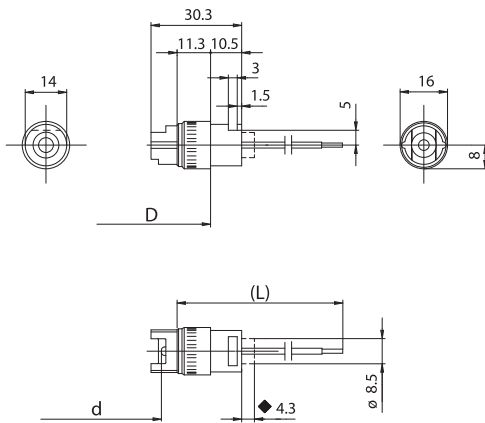
# A12



Double insulation



Double insulation

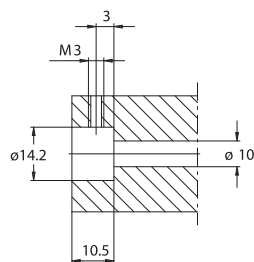


◆ Maximum jut of the steatite body during lamp insertion

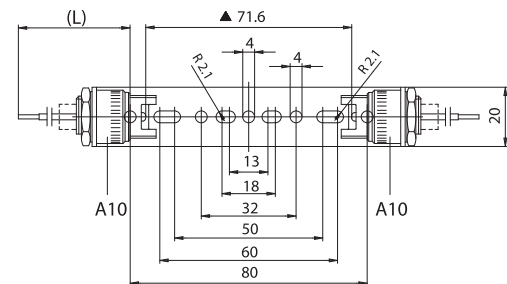
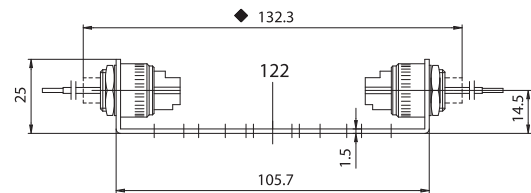
**A10E:** lampholder as A10, with nickel-plated brass envelope diameter 16 mm and reference plane for the fastening.

**A10EM:** version UR with device that blocks the lampholder body connected to the line (see A10M).

- D: fixing distance of the lampholders pairs on rigid structures:
  - 103,4 mm for lamps with R7s cap, with "Z nom." lamp 74,9 mm
  - 142,7mm for lamps with R7s cap, with "Z nom." lamp 114,2 mm
- Weight of the lampholders pair in standard execution: 30 g.
- Indications to fix the lampholder on structures.



- Fixing system of the lampholders pair by insertion in holes diameter 14,2 mm, in which lampholder stability is guaranteed screwing the M3 screws in the fore-made threads on the envelope holes (see the drawing).

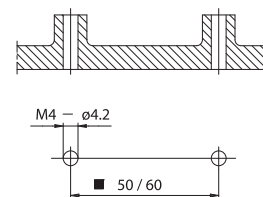


▲ Dimension without inserted lamp in the lampholder  
◆ Maximum jut of the steatite body during lamp insertion

**A12:** A10 lampholders assembled with spacer bracket in zinc-plated iron for lamps with R7s cap with "Z nom." lamp 74,9 mm art. 122.

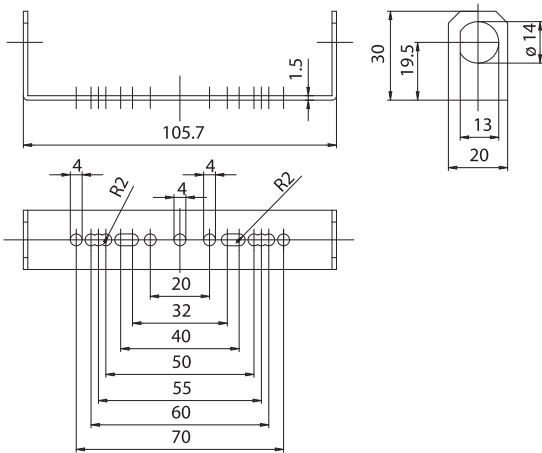
**A12M:** version UR and CSA, with device that blocks the lampholder body connected to the line (see A10M).

- Weight of the lampholder in standard execution: 65 g.
- Indications to fix the lampholder on structures.

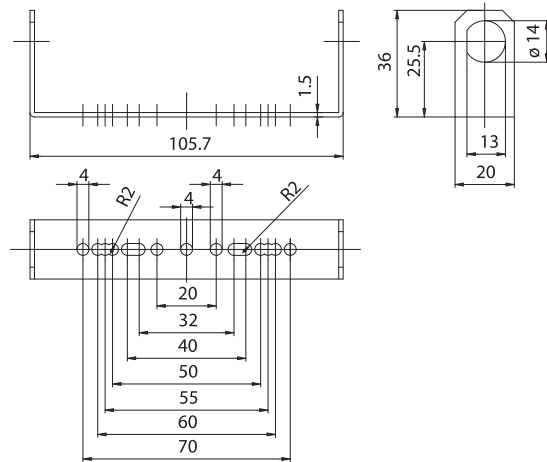


- Dimension for supported lampholder. When lampholder is placed on a plane, it is possible to use all the bracket holes.
- Fixing of the lampholder by M4 screws to be inserted in the holes of the bracket, placed on a plane surface on two supports with a center distance of 50 - 60 mm.

# 197



# 198



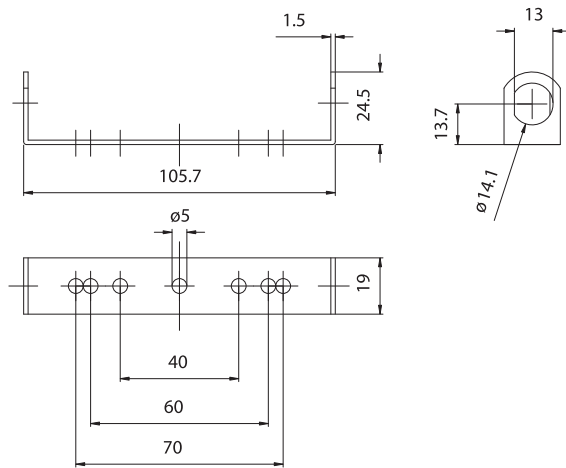
**197:** bracket in zinc-plated iron 30 mm high, for lampholders of the A10 series, for R7s lamps with "Z nom. " lamp 74,9 mm.

- Weight: 30 g.

**198:** bracket in zinc-plated iron 36 mm high, for lampholders of the A10 series, for R7s lamps with "Z nom. " lamp 74,9 mm.

- Weight: 30 g.

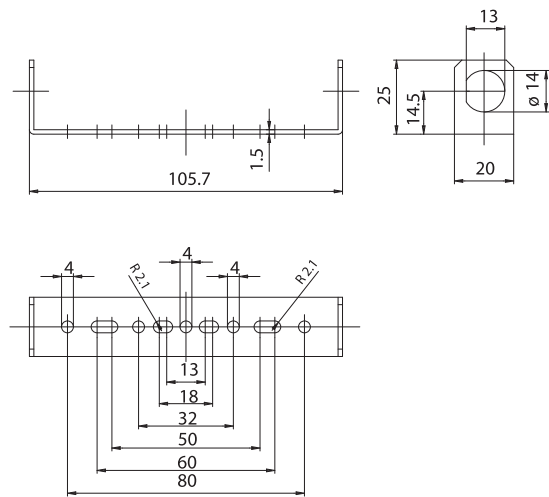
# 122R



**122R:** bracket in zinc-plated iron 25 mm high, for lampholders of the A10 series, for R7s lamps with "Z nom." lamp 74,9 mm.

- Weight: 30 g.

# 122



**122:** bracket in zinc-plated iron 25 mm high, for lampholders of the A10 series, for R7s lamps with "Z nom." lamp 74,9 mm.

- Weight: 30 g.

# A11



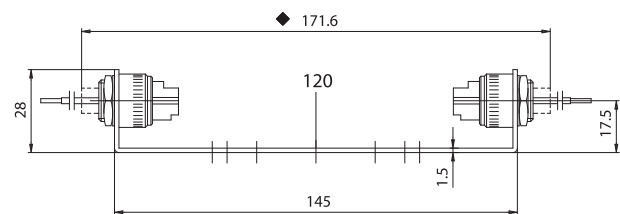
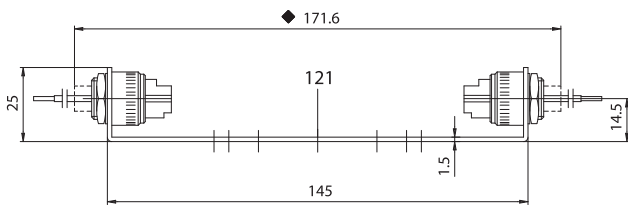
# A13



**Double insulation**



**Double insulation**



- ▲ Dimension without inserted lamp in the lampholder
- ◆ Maximum jut of the steatite body during lamp insertion

- ▲ Dimension without inserted lamp in the lampholder
- ◆ Maximum jut of the steatite body during lamp insertion

**A11:** A10 lampholders assembled with spacer bracket in zinc-plated iron for lamps with R7s cap with "Z nom." lamp 114,2 mm with central hole diameter 7 mm art.121.

**A13:** A10 lampholders assembled with spacer bracket in zinc-plated iron for lamps with R7s cap with "Z nom." lamp 114,2 mm with central hole diameter 7 mm art. 120.

**A11G:** with central hole diameter 11 mm.

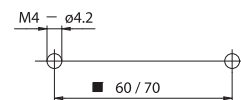
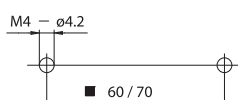
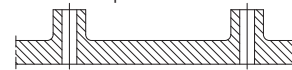
**A11P:** with central hole diameter 4,5 mm.

**A11M - A11GM - A11PM:** version UR and CSA, with device that blocks the lampholder body connected to the line (see A10M).

**A13M:** version UR, with device that blocks the lampholder body connected to the line (see A10M).

- Weight of the lampholder in standard execution: 75 g.
- Indications to fix the lampholder on structures.

- Weight of the lampholder in standard execution: 75 g.
- Indications to fix the lampholder on structures.



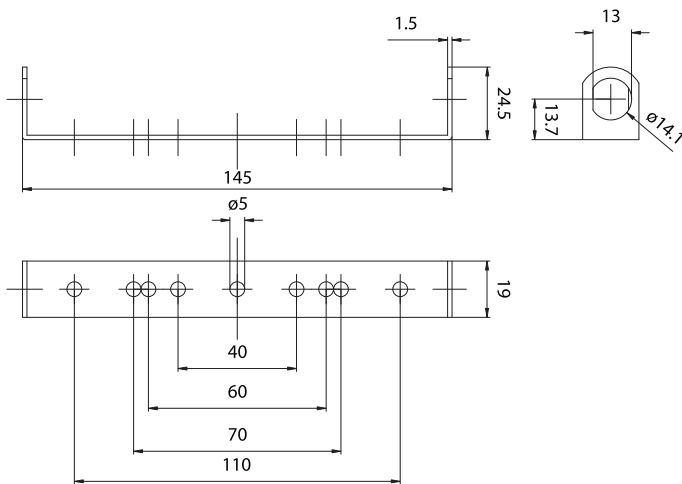
- Dimension for supported lampholder. When lampholder is placed on a plane, it is possible to use all the bracket holes.

- Dimension for supported lampholder. When lampholder is placed on a plane, it is possible to use all the bracket holes.

- Fixing of the lampholder by M4 screws to be inserted in the holes of the bracket, placed on a plane surface on two supports with a center distance of 60 - 70 mm.

- Fixing of the lampholder by M4 screws to be inserted in the holes of the bracket, placed on a plane surface on two supports with a center distance of 60 - 70 mm.

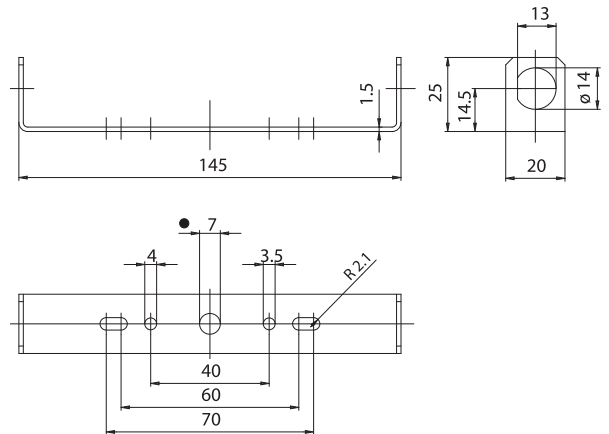
# 121R



**121R:** bracket in zinc-plated iron 25 mm high, for lampholders of the A10 series, for R7s lamps with “Z nom.” lamp 114,2 mm with central hole diameter 7 mm.

- Weight: 40 g.

# 121

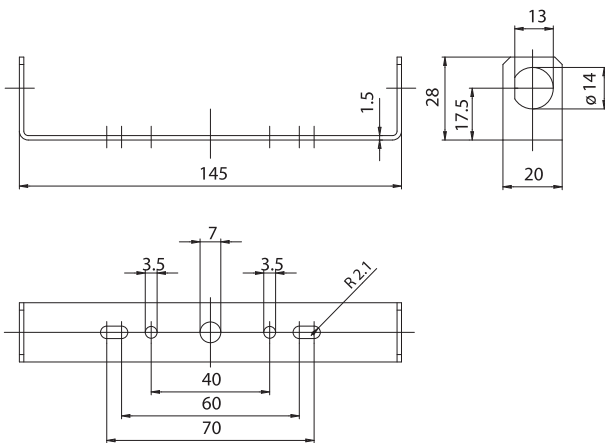


**121:** bracket in zinc-plated iron 25 mm high, for lampholders of the A10 series, for R7s lamps with “Z nom.” lamp 114,2 mm with central hole diameter 7 mm.

- 121G:** ● with central hole diameter 11 mm.
- 121P:** ● with central hole diameter 4,5 mm.

- Weight: 40 g.

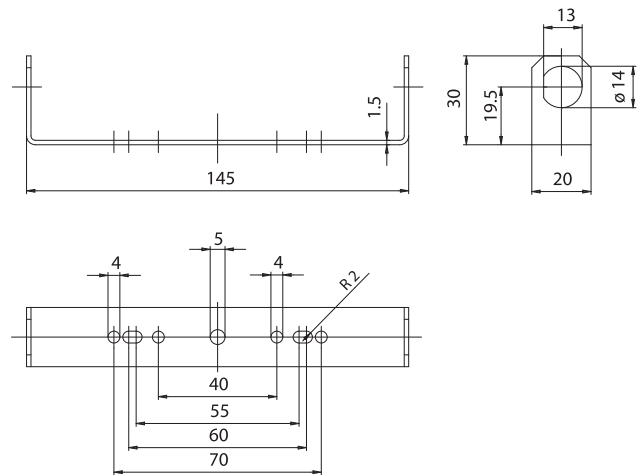
# 120



**120:** bracket in zinc-plated iron 28 mm high, for lampholders of the A10 series, for R7s lamps with "Z nom." lamp 114,2 mm.

- Weight: 40 g.

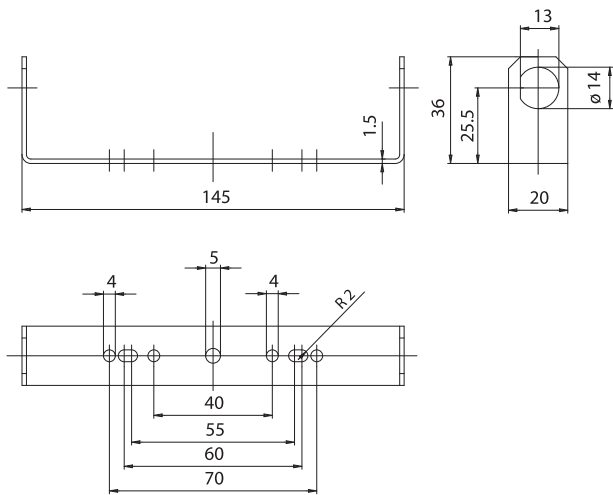
# 189



**189:** bracket in zinc-plated iron 30 mm high, for lampholders of the A10 series, for R7s lamps with "Z nom." lamp 114,2 mm.

- Weight: 30 g.

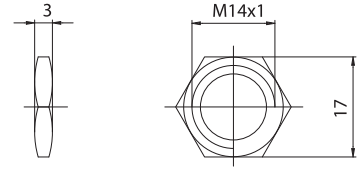
# 196



**196:** bracket in zinc-plated iron, 36 mm high, for lampholders of the A10 series, for R7s lamps with "Z nom." lamp 114,2 mm.

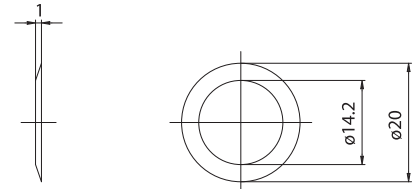
- Weight: 40 g.

# 119



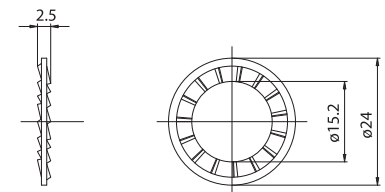
**119:** nut in nickel-plated brass, with threaded hole M14 x1, hexagonal 17 mm, thickness 3 mm, with double bevelling.

# 123



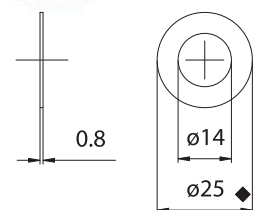
**123:** steel compensation washer, for lampholders of A10 series, to be used in fixing devices with conical bearing (for instance lampholders bearing forks of die-cast pieces).

# 142



**142:** tab washer in zinc-plated steel, for lampholders of A10 series (to be used as tighten guarantee for the eventual ground).

# 1099-



**1099:** washer in nickel-plated iron, diameter 25 mm, 0,8 mm thickness, for lampholders of A10 series, to be used as rear cover of the protection glasses.

**1099/30:** ♦ washer diameter 30 mm.