

2002



PATENTED

Lampholder:

GX12-1

Rated voltage:

500 V

Impulse voltage:

5 kV

Rated current:

4 A

Working temperature:

T 300°C

Overvoltage category:

III

Connected cables

working temperature:

T 150°÷ 250°C

In conformity to the standards:

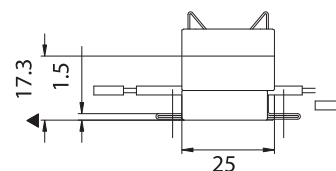
EN 60838-1

In conformity to the requirements
of the directive:

2014/35/EU



Double insulation



A33X: lampholder A33X with fixing bracket with two slotted holes.

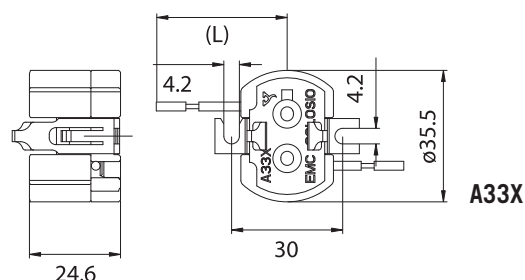
A33XU: lampholder as A33X with fixing bracket with hole and slotted hole.

A33XF: lampholder as A33X with threaded brass bushes M3 inserted in the fixing holes with center distance 30 mm.

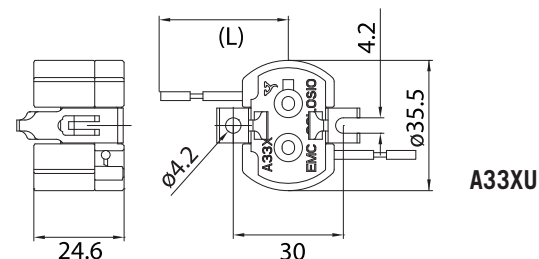
Single-conductor, flexible connecting cables crimped to the lampholder:

| Insulation | T in °C | Conduct. | Available sections and tensions | | | |
|--|---------|----------|---------------------------------|-------------------------|-------------------------|-------------------------|
| | | | Pulse kV | 0,75 mm ² | 1,00 mm ² | 1,50 mm ² |
| Silicone+Silicone <i>Single insulation</i> | 180 | CuSn | 5kV | • | • | |
| Oversize silicone <i>Single insulation</i> | 180 | CuSn | 5kV | • | • | |
| Oversize PTFE <i>Single insulation</i> | 250 | CuNi | 5kV | | • | |
| Oversize PTFE +PFA <i>Double insulation</i> | 250 | CuNi | 5kV | | • | |

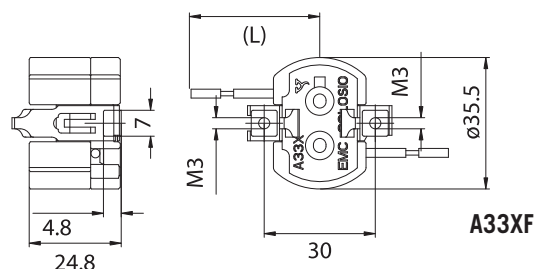
On customer's request, the cable not subjected to the lamp starter voltage, can be supplied with basic insulation.



A33X



A33XU



A33XF

▲ Reference plane



LAMPHOLDERS FOR DISCHARGE LAMPS

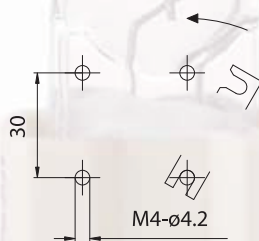
Lampholder whose creepage and clearance distances allow the use in class II fixtures with pulse peak voltage up to 5kV,
- or with working voltage up to 500V in applications foreseen for the overvoltage category II,
- or with working voltage up to 300V in applications foreseen for the overvoltage category III,
if connected with double or triple insulated cables (ref. standard EN 60598.1).

Solid fixing structure, in steel, independent from the ceramic body (this solves the problem of the easy breaking, during the fixing process, of the existing lampholders).
Furthermore, it allows a quick fixing by a bayonet system.

NOTE: normally, the lampholder should be fixed on plain fixing structure or on support with minimum diameter 10 mm.

- Steatite body.
Contacts in special alloy.
Steel strengthening springs for the contacts.
Lamp retaining spring in stainless steel.
- Weight of the lampholder in standard execution (with cables L=25 cm): 50 g

- Instructions to fix the lampholder on structures.



- Fixing of the lampholder by M4 or M3 screws, to be inserted in the fixing holes, of the spring bracket, with center distance 30 mm.

A33X



PATENTED

Lampholder:

GX12-1

Maximum power:
Rated voltage:
Impulse voltage:
Working temperature:
Connected cables
working temperature:
In conformity to the standards:

660 W
600 V
5 kV
T 250°C
T 105°÷ 250°C
UL 496
CSA 22.2 N.43

Approval marks:

cURus

Single-conductor, flexible connecting cables crimped to the lampholder:

| Insulation | T in °C | Conduct. | Available voltages and AWG | |
|---|---------|----------|----------------------------|-------|
| | | | 600V | 18AWG |
| Silicone Single insulation | 200 | CuSn | • | • |
| Silicone+glass-braid Single insulation | 200 | CuSn | • | • |
| PTFE Single insulation | 250 | CuNi | • | • |
| PTFE+PFA Double insulation | 250 | CuNi | • | • |

