

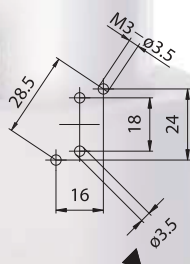
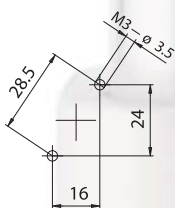
# LAMPHOLDERS FOR FLUORESCENT LAMPS

**Attention:** also available version with “universal” key for lamp insertion.

- ref. art. A50D0, for version with G24 d- connection  
(version without the anti-rotation device)
- ref. art. A50ADO, for version with G24 d- connection  
(version with the anti-rotation device)
- ref. art. A50Q0, for version with G24 q- connection  
(version without the anti-rotation device)
- ref. art. A50AQ0, for version with G24 q- connection  
(version with the anti-rotation device)

**Note:** connecting cables shall be stripped from 6 to 8 mm.

- Body with round thread 40 x 2,5 mm in white PA66 25% fiberglass V2 (other colours on request).  
Contacts in special alloy (double for “q” series).  
Push-in clamps, with double entry-hole, built in the contacts, fore-made in order to connect the following cables (which can be supplied, on request, already cut and worked on customer's specifications):
  - solid wires from section 8/10 (0.50 mm<sup>2</sup>) to section 12/10 (1.00 mm<sup>2</sup>).
  - flexible wires with tinned ends from section 0.50 mm<sup>2</sup> to section 1.00 mm<sup>2</sup>.
  - flexible wires with crimped end-terminals from section 0.50 mm<sup>2</sup> to section 0.75 mm<sup>2</sup>.
- Weight: 20 g.
- Instructions to fix the lampholder on structures.



▲ Anti-rotation hole

- Fixing of the lampholders:  
either using the holes 3,5 mm with center-holes 28,5 mm (if M3 screws are used, the screw head must be less than 5,8 mm),  
or using the central hole diameter 3,2 mm when the support structure for the lampholders is equipped with anti-rotation devices (foresee, if necessary, the holes for cables passage).



# A50-

1993



## Lampholders:

**G24d1** (Art. A50 D1)  
**G24q1** (Art. A50 Q1)  
for **10-13W** lamps

**G24d2** (Art. A50 D2)  
**G24q2** (Art. A50 Q2)  
for **18W** lamps

**G24d3** (Art. A50 D3)  
**G24q3** (Art. A50 Q3)  
for **26-32W** lamps

**GX24q4** (Art. A50 Q4)  
for **42W** lamps

Rated voltage:  
Rated current:  
Working temperature:  
Type of clamps for cables  
connection:

**500 V**  
**2 A**  
**T 140°C**

Clamps connecting capacity:  
Overvoltage category:  
Protection degree (IP):  
In conformity to the standards:  
In conformity to the requirements  
of the directive:

**SPRING CLAMPS**  
**(Push-in insertion)**  
**0,50 ÷ 1,00 mm<sup>2</sup>**  
**III**  
**IP20**  
**EN 60400**  
**2014/35/EU**

## Approval marks:

**A50D1 - A50Q1:** version for 10-13W lamps without anti-rotation device.

**A50AD1 - A50AQ1:** version for 10-13W lamps with anti-rotation device to be used when fixing the lampholders using the central hole diameter 3,2 mm.

**A50D2 - A50Q2:** version for 18W lamps without anti-rotation device.

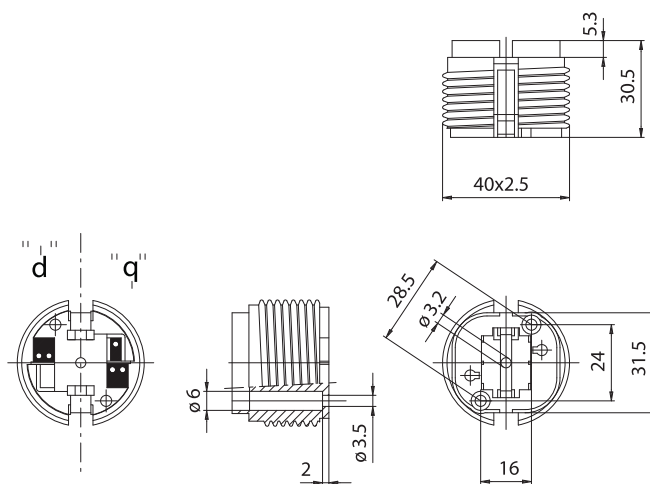
**A50AD2 - A50AQ2:** version for 18W lamps with anti-rotation device to be used when fixing the lampholders using the central hole diameter 3,2 mm.

**A50D3 - A50Q3:** version for 26-32W lamps without anti-rotation device.

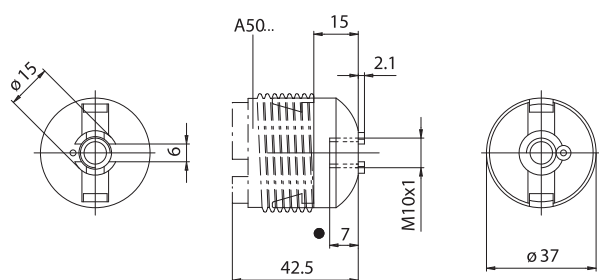
**A50AD3 - A50AQ3:** version for 26-32W lamps with anti-rotation device to be used when fixing the lampholders using the central hole diameter 3,2 mm.

**A50Q4:** version for 42W lamps without anti-rotation device.

**A50AQ4:** version for 42W lamps with anti-rotation device to be used when fixing the lampholders using the central hole diameter 3,2 mm.



## 163



Thread depth

**163:** cap for A50 lampholders in white PA66 25% G.F. V2 with threaded hole M10 x1.

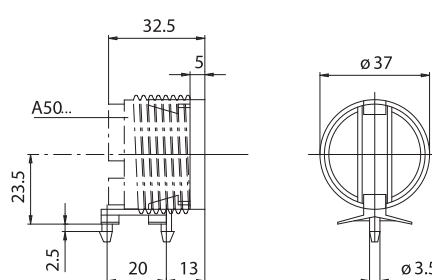
163Z: cap with screw to block the nipple.

**163P:** cap with through hole diameter 10,2 mm.

- Weight: 5 g.

- Snap-in fixing to the lampholders.

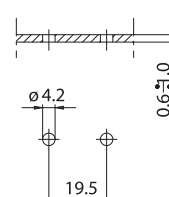
## 167



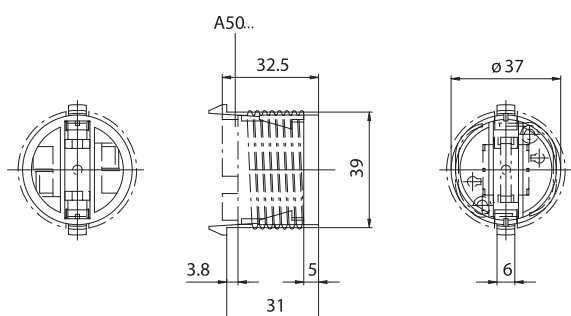
**167:** adapter for A50 lampholders in white PA66 25% G.F. V2 with base with two stems to be snapped in plates holes with 0.6 ÷ 1.0 mm thickness.

- Weight: 4 g.
- Instructions to fix the adapter on structures.

- Snap-in fixing to the lampholders.

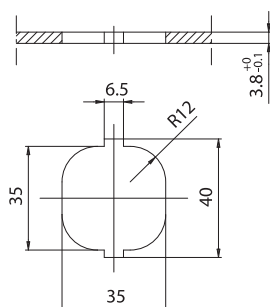


## 164



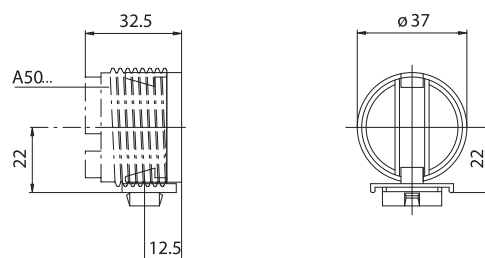
**164:** adapter for A50 lampholders in white PA66 25% G.F. V2 with extensions to fix the lampholder, by snap-in, on plates with 0.6 ÷ 1.0 mm thickness with the same profile of the lampholders.

- Weight: 3 g.
- Instructions to fix the adapter on structures.



- Snap-in fixing to the lampholders.

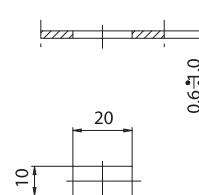
## 166



**166:** adapter for A50 lampholders in white PA66 25% G.F. V2 with base to be snapped in plates rifts 20 x 10 mm, plates thickness 0.6 ÷ 1.0 mm.

Note: the cables may pass through the adapter base.

- Weight: 4 g.
- Instructions to fix the adapter on structures.



- Snap-in fixing to the lampholders.