

LAMPHOLDERS FOR DISCHARGE LAMPS

A70



*Lampholder whose creepage and clearance distances allow the use in class II fixtures with pulse peak voltage up to 2,5kV,
- or with working voltage up to 300V in applications foreseen for the overvoltage category II,
- or with working voltage up to 250V in applications foreseen for the overvoltage category III,
if connected with double or triple insulated cables (ref. standard EN 60598.1).*

Solid fixing steel structure, independent from the body, which allows to carry out quick and safe fixing of the lampholder. This solves the problem of the easy breaking, during the fixing process, of the existing lampholders.

- Steatite body (not produced in Europe).
External envelope in black LCP.
Contacts in special silver-plated alloy.
- **Glow wire 960° C**
- Weight of the lampholder in standard execution (with cables L = 25 cm): 11 g.

- Instructions to fix the lampholder on structures: snap-in fixing on the support bracket inserted in the accessories presented in the following pages.



PATENTED

Lampholder:	PGJ5
Rated voltage:	500 V
Rated current:	2 A
Impulse voltage:	2,5 kV
Working temperature:	T 240°C
Connected cables	
working temperature:	T 105°÷ 250°C
In conformity to the standards:	UL 496
	CSA 22.2 N.43

Approval marks: **cURus**

Single-conductor, flexible cables connected to the lampholder:

Insulation	T in °C	Conduct.	Available voltages and AWG		
			300V	600V	18AWG
Silicone Single insulation	200	CuSn		•	•
PTFE Single insulation	250	CuNi		•	•
PTFE+PFA Double insulation	250	CuNi		•	•

Attention: in the end product the cables connected to this lampholder should not be accessible during the normal replacement operations of the lamp (if accessible a cord-grip device should be provided).



A70

2004



PATENTED

Lampholder:

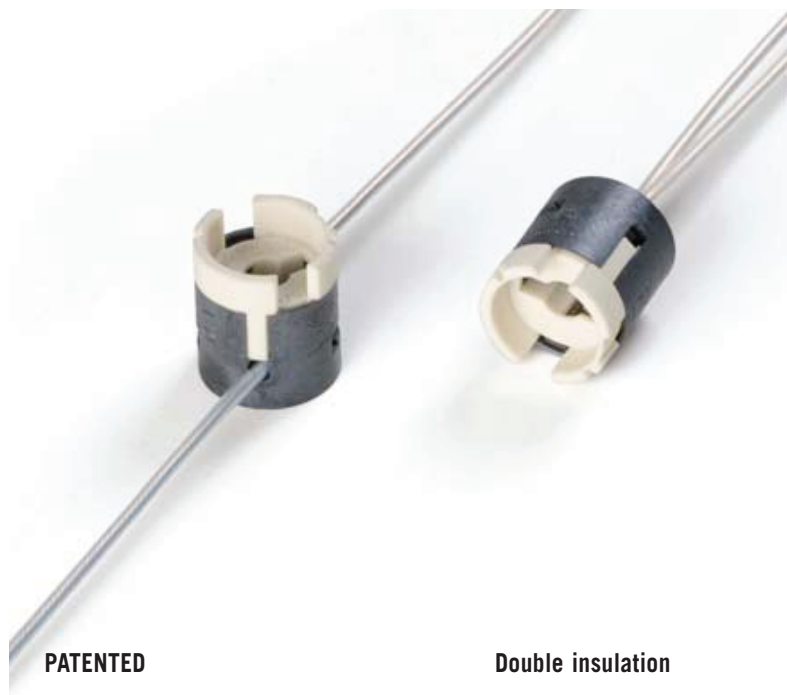
Rated voltage:
Impulse voltage:
Rated current:
Working temperature:
Connected cables
working temperature:
Overvoltage category:
Protection degree (IP):
In conformity to the standards:
In conformity to the requirements
of the directive:
Approval marks:

PGJ5

500 V
2,5 kV
2 A
T 260°C

T 105°÷ 250°C
III
IP20
EN 60838-1

2014/35/EU



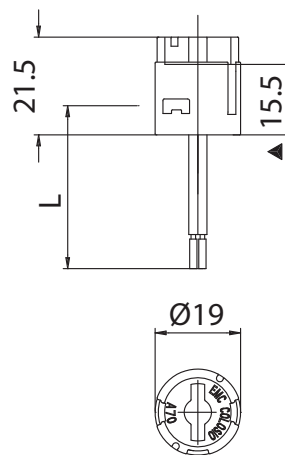
PATENTED

Double insulation

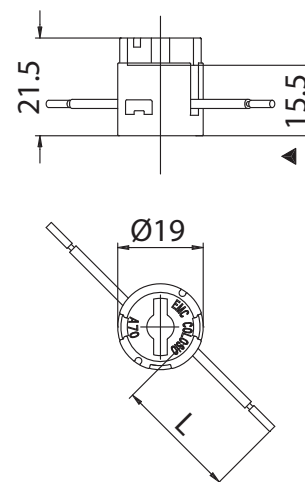
Single-conductor, flexible connecting cables crimped to the lampholder:

Insulation	T in °C	Conduct.	Available sections and tensions			
			0,50 mm ²	0,75 mm ²	1,00 mm ²	1,50 mm ²
Silicone <i>Single insulation</i>	180	CuSn	•	•		
Silicone+glass-braid <i>Single insulation</i>	180	CuSn	•	•		
PTFE <i>Single insulation</i>	180	CuSn	•	•	•	
PTFE <i>Single insulation</i>	250	CuNi	•	•	•	
PTFE+PTFE <i>Double insulation</i>	250	CuNi	•	•	•	
PTFE+PFA <i>Double insulation</i>	250	CuNi		•	•	
PTFE+PFA+PFA <i>Triplo isolamento</i>	250	CuNi		•		

A70



A70L



▲ Reference plane



724-

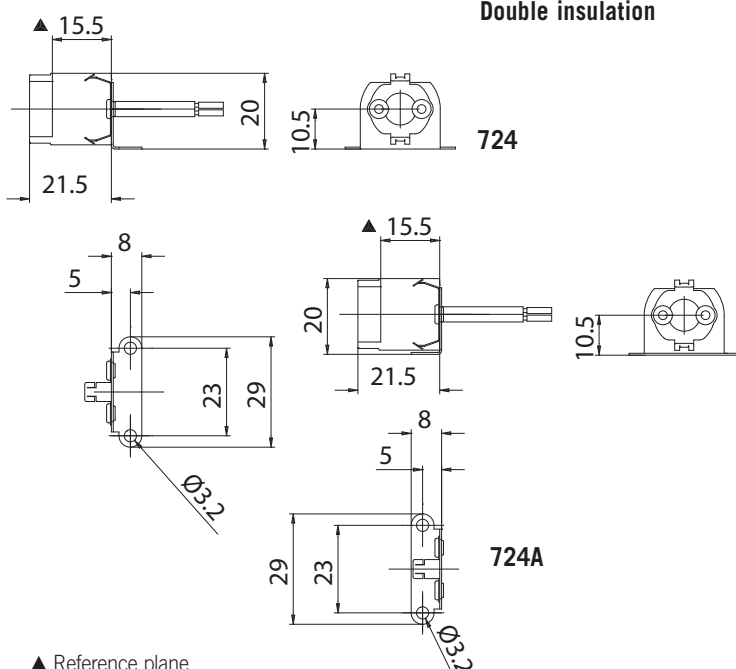


Double insulation

725



Double insulation

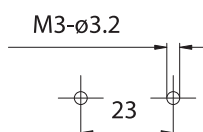


▲ Reference plane

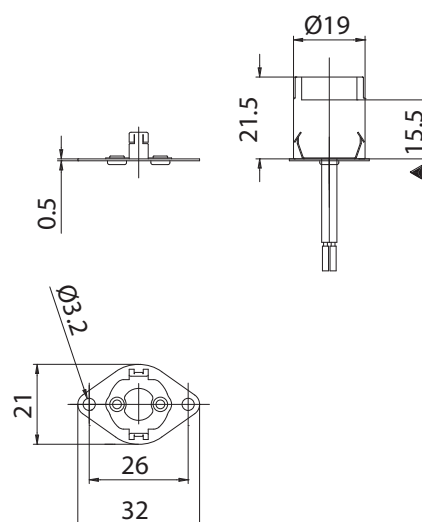
724: 90° bracket, for lampholders A70-, in nickel-plated iron, with fixing holes diameter 3,2 mm, with 23 mm center distance, turned towards the cables.

724A: 90° bracket, in nickel-plated iron, with fixing holes diameter 3,2 mm with 23 mm center distance, turned towards the lampholder.

- Weight: 3 g.
- Instructions to fix the lampholder on structures.



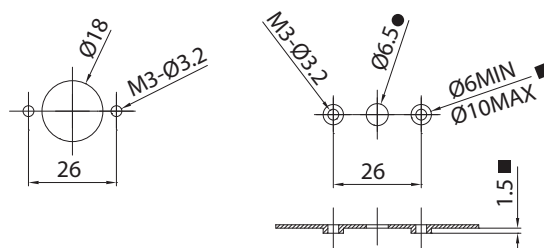
- Bracket fixing by holes diameter 3,2 mm with center distance 23 mm.
- Snap-in fixing to the lampholders.



▲ Reference plane

725: plate bracket, for lampholders A70-, in nickel-plated iron, with fixing holes diameter 3,2 mm with center distance 26 mm.

- Weight: 2 g.
- Instructions to fix the lampholder on structures.



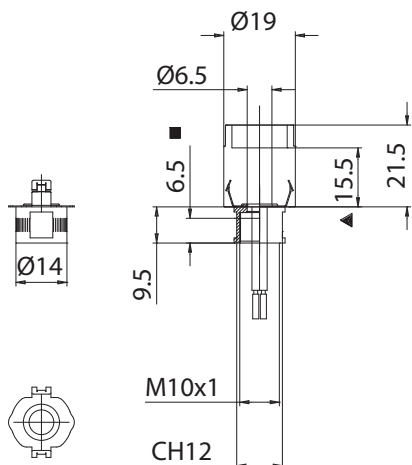
Suggested minimum dimension (if necessary)
● for cables passage ■ for fixing columns

- Bracket fixing by holes diameter 3,2 mm with center distance 26 mm.
- Snap-in fixing to the lampholders.

720



Double insulation



▲ Reference plane ■ Thread depth

720: female nipple, for lampholders A70-, in nickel-plated brass, with threaded hole M10 x1.

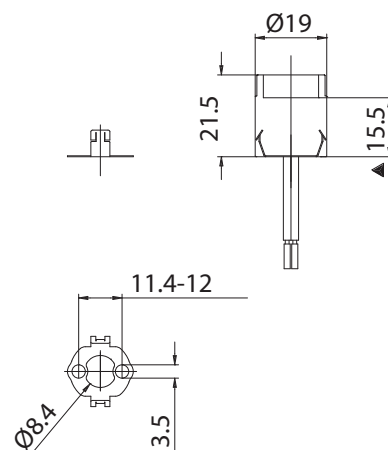
- Weight: 7 g.

- Fixing of the adapter by threaded nipples.
- Snap-in fixing to the lampholders.

719



Double insulation

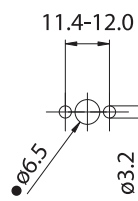


▲ Reference plane

719: support bracket, for lampholders A70-, in steel, with fixing slotted holes diameter 3,5 mm with center distance 11,4 ÷ 12,0 mm.

Available screws M3 x 8 mm with rounded hexagonal head, diameter 5,7 mm, key 2 mm, in white zinc-plated steel (art. 536).

- Weight: 0,5 g.
- Instructions to fix the lampholder on structures.



● Suggested minimum dimension for cables passage (if necessary)

- Bracket fixing by holes diameter 3,2 mm with center distance 11,4 ÷ 12,0 mm.
- Snap-in fixing to the lampholders.