

LAMPHOLDERS FOR DISCHARGE LAMPS

A80



Lampholder:	G8.5
Rated voltage:	750 V
Rated current:	1 A
Impulse voltage:	5 kV
Working temperature:	T 250°C
Connected cables working temperature:	T 105° ÷ 250°C
In conformity to the standards:	UL 496 CSA 22.2 N.43
Approval marks:	cURus

- Steatite body.
Contacts in special alloy.
Pressure spring in normalized stainless steel.
- Weight of the lampholder in standard execution (with cables L = 25 cm): 30 g.



- Instructions to fix the lampholder on structures.

• Holes for cables passage (if necessary)

- Fixing of the lampholder by M3 screws, with maximum head diameter 6,0 mm, to be inserted in the fixing holes with center distance 18 mm.

Single-conductor, flexible connecting cables crimped to the lampholder:

Insulation	T in °C	Conduct.	Available voltages and AWG	
			600V	18AWG
Silicone <i>Single insulation</i>	200	CuSn	•	•
Silicone+glass-braid <i>Single insulation</i>	200	CuSn	•	•
PTFE <i>Single insulation</i>	250	CuNi	•	•
PTFE+PFA <i>Double insulation</i>	250	CuNi	•	•



A80

1998



Lampholder:

G8.5

Rated voltage:

500 V

Impulse voltage:

5 kV

Rated current:

2 A

Working temperature:

T 250°C

Connected cables

working temperature:

T 105°÷ 250°C

Overvoltage category:

III

Protection degree (IP):

IP20

In conformity to the standards:

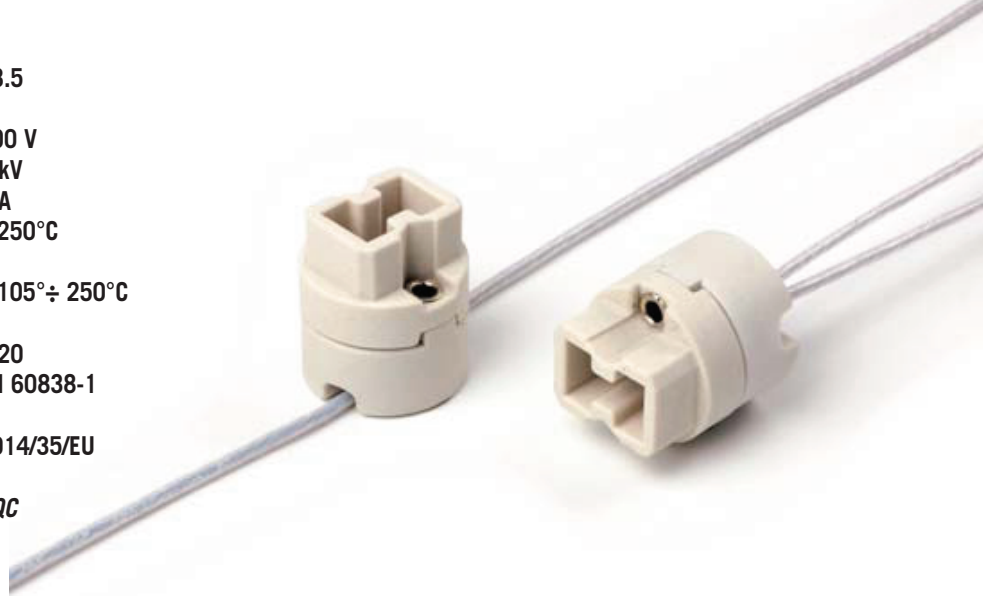
EN 60838-1

In conformity to the requirements of the directive:

2014/35/EU

Approval marks:

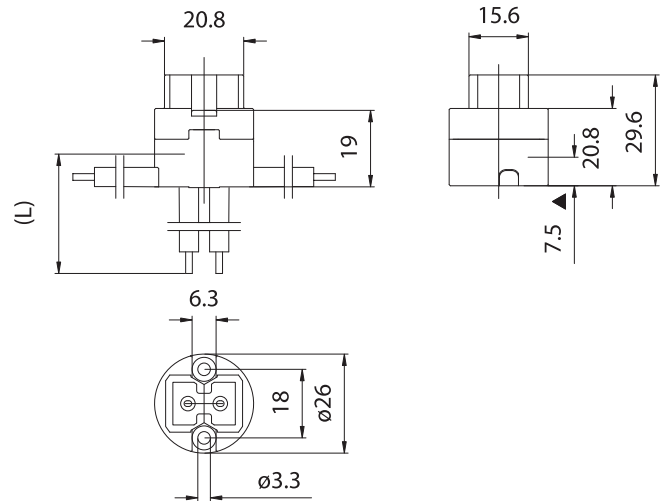
CQC



Single-conductor, flexible connecting cables crimped to the lampholder:

Insulation	T in °C	Conduct.	Available sections and tensions			
			Pulse kV	0,75 mm ²	1,00 mm ²	1,50 mm ²
Oversize silicone <i>Single insulation</i>	180	CuSn	10kV			
Silicone+Silicone <i>Single insulation</i>	180	CuSn	5kV	•	•	
Oversize silicone <i>Single insulation</i>	180	CuSn	5kV	•	•	
Oversize PTFE <i>Single insulation</i>	250	CuNi	5kV		•	
Oversize PTFE +PFA <i>Double insulation</i>	250	CuNi	5kV		•	

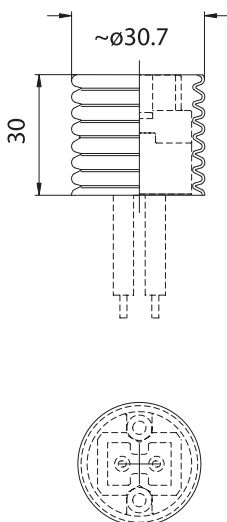
On customer's request, the cable not subjected to the lamp starter voltage, can be supplied with basic insulation.



▲ Reference plane



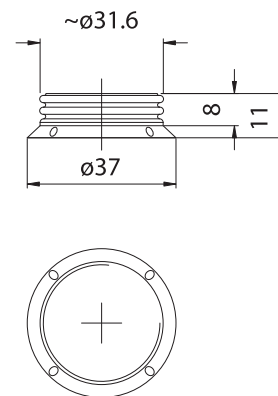
435/30



435/30: case, white zinc-plated iron, with round thread, external diameter 30,7 mm, height 30 mm.

- Weight: 10 g.

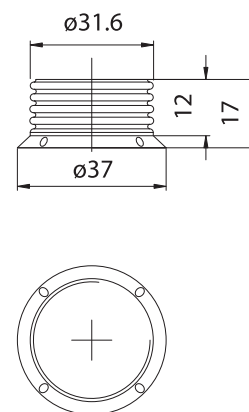
435F/11



435F/11: ring-nut, in white zinc-plated iron, with round thread, external diameter 31,6 mm, height 11 mm, for case 435-.

- Weight: 2,2 g.

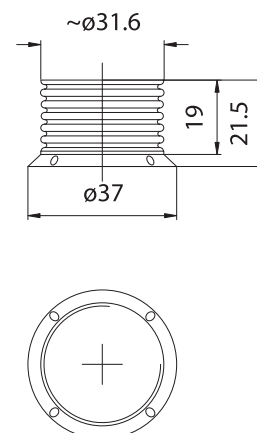
435F/15



435F/15: ring-nut, in white zinc-plated iron, with thread, external diameter 31,6 mm, height 15 mm, for case 435-.

- Weight: 2,2 g.

435F/22



435F/22: ring-nut, in white zinc-plated iron, with round thread, external diameter 31,6 mm, height 22 mm, for case 435-.

- Weight: 2,3 g.