

LAMPHOLDERS FOR DISCHARGE LAMPS

Lampholder whose creepage and clearance distances allow the use in class II fixtures with pulse peak voltage up to 4,5kV,
- or with working voltage up to 350V in applications foreseen for the overvoltage category II,
- or with working voltage up to 300V in applications foreseen for the overvoltage category III,
if connected with double or triple insulated cables (ref. standard EN 60598.1).

NOTE 1: back cable-clamp cover to be assembled after having inserted the cables in double insulation, which can exit from the back side or lateral side of the lampholder (ref. standard EN 60598.1 par. 5.2.10.3 "pull test 60 N" and "torsion test 0,15 Nm").

NOTE 2: used as connector is suitable for the external use in lighting fixtures according to the paragraph 4.13.1 "mechanical resistance" of standard EN 60598.1.

In some applications, it is necessary to guarantee the fastening of the cable-clamps cover by two 3 x 12 thread-forming screws for plastic, to be inserted in the holes with center distance 24 mm (ref. art. 526).

Attention: consider 5 cm of cables loss in lampholder with cables exit from the back side; consider 7 and 3 cm of cables loss in lampholder with cables exit from the lateral side.

Note: on request, it is also possible to supply the lampholder with already inserted cables (ref. A85C- with back side exit, ref. A85LC- with lateral side exit).

- Grey LCP body (black on request).
Contacts in special golden-plated alloy.
Push-in clamps built in the contacts.
Cables exit from the back side or lateral side.
Built in cable-clamp device.
Aesthetical cover in aluminium with finishing raw, or polished, or sand-blasted and anodized (or painted, on request).

- **Glow wire 960° C**

- Weight: 30 g.

- Instructions to fix the lampholder on structures, if necessary:
 - see the note here below or see the accessories presented in the following pages.
 - It is possible to fix the lampholder by two thread-forming screws for plastic diameter 3 mm, max length 15 mm + thickness of the material, to be inserted in the holes with center distance 24 mm (available thread-forming screws for plastic 3 x15 mm, ref. art. 650).

A85C-



PATENTED

Lampholder - connector:

GX8.5

Rated voltage: 750 V
Rated current: 2 A
Impulse voltage: 5 kV
Working temperature: T 220°C
Type of clamps to connect the cables:

SPRING CLAMPS
(push-in insertion)

Clamps connecting capacity:
In conformity to the standards:

18 AWG
UL 496
CSA 22.2 N.43

Approval marks:

cURus



Single-conductor flexible connecting cables which could be connected to the lampholder (arranged with crimped end-terminals):

Insulation	T in °C	Conduct.	Available voltages and AWG	
			600V	18AWG
Silicone Single insulation	200	CuSn	•	•
Silicone+glass-braid Single insulation	200	CuSn	•	•
PTFE Single insulation	250	CuNi	•	•
PTFE+PFA Double insulation	250	CuNi	•	•

A85C-

2003

CE

PATENTED

Lampholder - connector:

Rated voltage:

Impulse voltage:

Rated current:

Working temperature:

Type of clamps to connect the cables:

Clamps connecting capacity:

Overvoltage category:

Protection degree (IP):

In conformity to the standards:

In conformity to the requirements of the directive:

Approval marks:

GX8.5

500 V

5 kV

2 A

T 220°C

SPRING CLAMPS
(push-in insertion)

1 mm²

III

IP20

EN 60838-1

2014/35/EU



Double insulation

A85CB: version of the lampholder A85 with back central exit of the cables and aesthetical cover in sand-blasted and anodized aluminium (for the cover ref. art. 496/27B).

A85LCB: version of the lampholder A85 with lateral exit of the cables and aesthetical cover in sand-blasted and anodized aluminium (for the cover ref. art. 496L/27B).

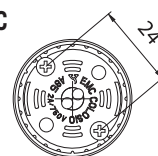
A85CQ: version of the lampholder A85 with back central exit of the cables and aesthetical cover in polished aluminium (for the cover ref. art. 496/27Q).

A85LCQ: version of the lampholder A85 with lateral exit of the cables and aesthetical cover in polished aluminium (for the cover ref. art. 496L/27Q).

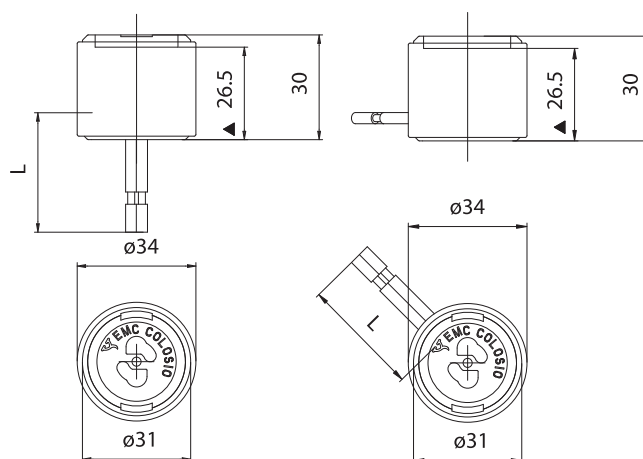
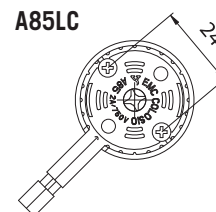
Single-conductor flexible connecting cables which could be connected to the lampholder (arranged with crimped end-terminals):

Insulation	T in °C	Conduct.	Available sections and tensions			
			Pulse kV	0,75 mm ²	1,00 mm ²	1,50 mm ²
Silicone+Silicone <i>Single insulation</i>	180	CuSn	5kV		•	
Oversize silicone <i>Single insulation</i>	180	CuSn	5kV		•	
Oversize PTFE <i>Single insulation</i>	250	CuNi	5kV		•	
Oversize PTFE+PFA <i>Double insulation</i>	250	CuNi	5kV		•	

A85C



A85LC



▲ Reference plane



LAMPHOLDERS FOR DISCHARGE LAMPS

Lampholder whose creepage and clearance distances allow the use in class II fixtures with pulse peak voltage up to 4,5kV,
 - or with working voltage up to 350V in applications foreseen for the overvoltage category II,
 - or with working voltage up to 300V in applications foreseen for the overvoltage category III,
 if connected with double or triple insulated cables (ref. standard EN 60598.1).

NOTE: back cable-clamp cover to be assembled after having inserted the cables in double insulation, which can exit from the back side or lateral side of the lampholder (ref. standard EN 60598.1 par. 5.2.10.3 "pull test 60 N" and "torsion test 0,15 Nm").

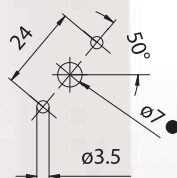
In some applications, it is necessary to guarantee the fastening of the cable-clamps cover by two 3 x 12 thread-forming screws for plastic, to be inserted in the holes with center distance 24 mm (ref. art. 526).

Attention: consider 5 cm of cables loss in lampholder with cables exit from the back side; consider 7 and 3 cm of cables loss in lampholder with cables exit from the lateral side.

Note: on request, it is also possible to supply the lampholder with already inserted cables (ref. A85- with back side exit, ref. A85L- with lateral side exit).

- Grey LCP body (code A85E-) or black LCP body (code A85N-).
 Contacts in special golden-plated alloy.
 Push-in clamps built in the contacts.
 Cables exit from the back side or lateral side.
Built in cable-clamp device.

- **Glow wire 960° C**
- Weight: 20 g.
- Instructions to fix the lampholder on structures, if necessary:
 - see the note here below or see the accessories presented in the following pages.
 - It is possible to fix the lampholder by two thread-forming screws for plastic diameter 3 mm, max length 15 mm + thickness of the material, to be inserted in the holes with center distance 24 mm (available thread-forming screws for plastic 3 x15 mm, ref. art. 650).



- Suggested minimum dimension for cables passage (if necessary)

A85



PATENTED

Lampholder - connector:

GX8.5

Rated voltage:
 Rated current:
 Impulse voltage:
 Working temperature:
 Type of clamps to connect the cables:

**750 V
 2 A
 5 kV
 T 220°C**

**SPRING CLAMPS
 (push-in insertion)**

Clamps connecting capacity:
 In conformity to the standards:

**18 AWG
 UL 496
 CSA 22.2 N.43**

Approval marks:

cURus

Single-conductor flexible connecting cables which could be connected to the lampholder (arranged with crimped end-terminals):

Insulation	T in °C	Conduct.	Available voltages and AWG	
			600V	18AWG
Silicone Single insulation	200	CuSn	•	•
Silicone+glass-braid Single insulation	200	CuSn	•	•
PTFE Single insulation	250	CuNi	•	•
PTFE+PFA Double insulation	250	CuNi	•	•



A85

2003



PATENTED

Lampholder - connector:

Rated voltage:

Impulse voltage:

Rated current:

Working temperature:

Type of clamps to connect the cables:

Clamps connecting capacity:

Overvoltage category:

Protection degree (IP):

In conformity to the standards:

In conformity to the requirements of the directive:

Approval marks:

GX8.5

500 V

5 kV

2 A

T 220°C

SPRING CLAMPS
(push-in insertion)

1 mm²

III

IP20

EN 60838-1

2014/35/EU



Double insulation

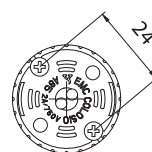
A85E-: lampholder A85 with body in grey LCP.

A85N-: lampholder A85 with body in black LCP.

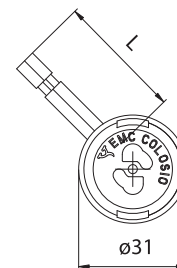
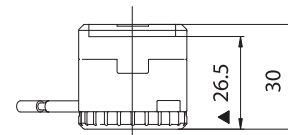
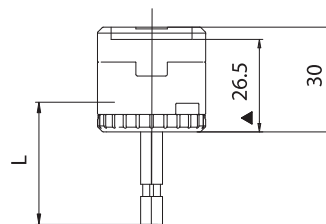
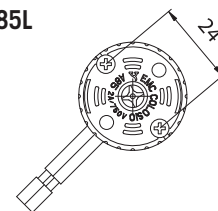
Single-conductor flexible connecting cables which could be connected to the lampholder (arranged with crimped end-terminals):

Insulation	T in °C	Conduct.	Available sections and tensions			
			Pulse kV	0,75 mm ²	1,00 mm ²	1,50 mm ²
Silicone+Silicone <i>Single insulation</i>	180	CuSn	5kV		•	
Oversize silicone <i>Single insulation</i>	180	CuSn	5kV		•	
Oversize PTFE <i>Single insulation</i>	250	CuNi	5kV		•	
Oversize PTFE+PFA <i>Double insulation</i>	250	CuNi	5kV		•	

A85



A85L



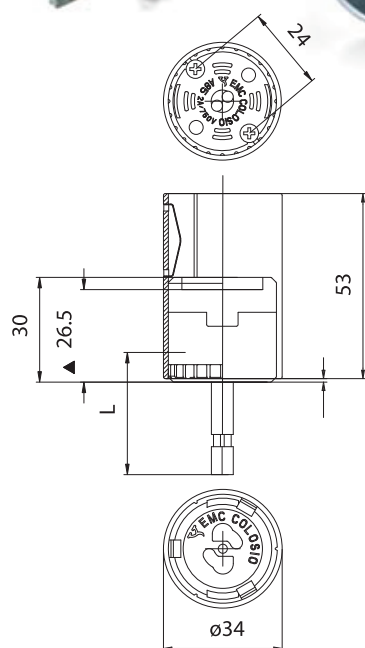
▲ Reference plane



A85CM



Double insulation



▲ Reference plane

A85CM: version of the A85 lampholder with back central exit of the cables and "lamp-guide" cover with three internal leaf springs. The cover, length 53 mm, is in sand-blasted and anodised aluminium.

A85LCM: version of the A85 lampholder with lateral exit of the cables and "lamp-guide" cover with three internal leaf springs. The cover, length 53 mm, is in sand-blasted and anodised aluminium.

- Weight: 40 g.

The "lamp-guide" cover grants that the bulb remains in axial position with the lampholder when this is not use free, like a connector, but used fixed to a structure as lampholder.

496/53---: only "lamp-guide" cover, length 53 mm, with the three springs included, but not assembled to the cover, in the following versions:

- **496/53BS:** cover in sand-blasted and anodised aluminium for A85 lampholder with back central exit of the cables.
- **496/53LBS:** cover in sand-blasted and anodised aluminium for A85 lampholder with lateral exit of the cables.
- **496/53GS:** cover in raw aluminium for A85 lampholder with back central exit of the cables.
- **496/53LGS:** cover in raw aluminium for A85 lampholder with lateral exit of the cables.

- Weight: 20 g.

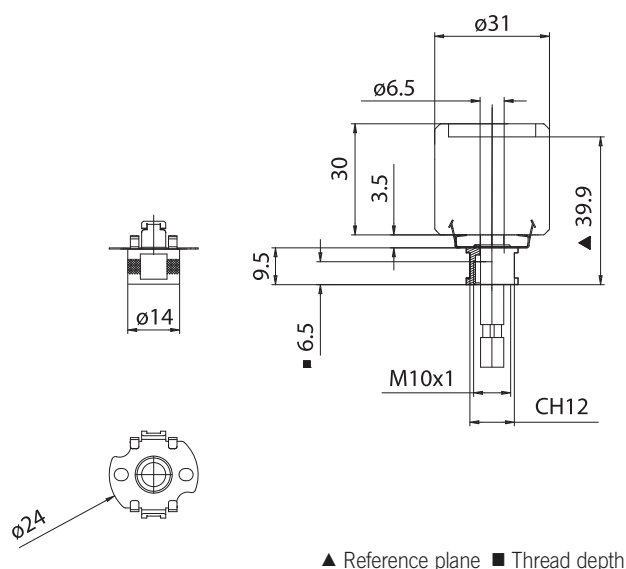
The "lamp-guide" cover grants that the bulb remains in axial position with the lampholder when this is not use free, like a connector, but used fixed to a structure as lampholder.

- To fix the lampholder see the data sheet of the lampholder A85 or the accessories represented in the following page.

730



Double insulation



730: female nipple, for lampholders A85-, in nickel-plated brass, with threaded hole M10 x1.

Note: when the lampholders of this series are used with this accessory the back part of the lampholder, "the back cord-grip cap", is different from the standard one to assure a correct snap-in fixing of the bracket with the lampholder. In this case the reference code for the lampholder becomes A85A, for the version without aesthetical covering, and A85AC-, for the version with the aesthetical covering.

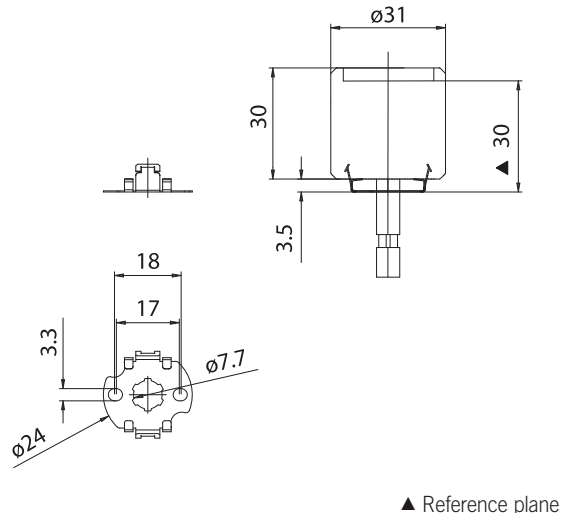
- Weight: 10 g.

- Fixing of the adapter by threaded nipples.
- Snap-in fixing to the lampholders.

729



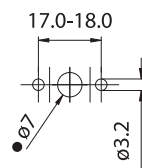
Double insulation



729: support bracket, for lampholders A85-, in steel, with fixing slotted holes diameter 3,5 mm with center distance $17 \div 18$ mm.

Note: when the lampholders of this series are used with this accessory the back part of the lampholder, "the back cord-grip cap", is different from the standard one to assure a correct snap-in fixing of the bracket with the lampholder. In this case the reference code for the lampholder becomes A85A-, for the version without aesthetical covering and A85AC-, for the version with the aesthetical covering.

- Weight: 4 g.
- Instructions to fix the lampholder on structures.



- Suggested minimum dimension for cables passage (if necessary)

- Bracket fixing using the two holes diameter 3,5 mm with center distance 17 or 18 mm.
- Snap-in fixing to the lampholders.