

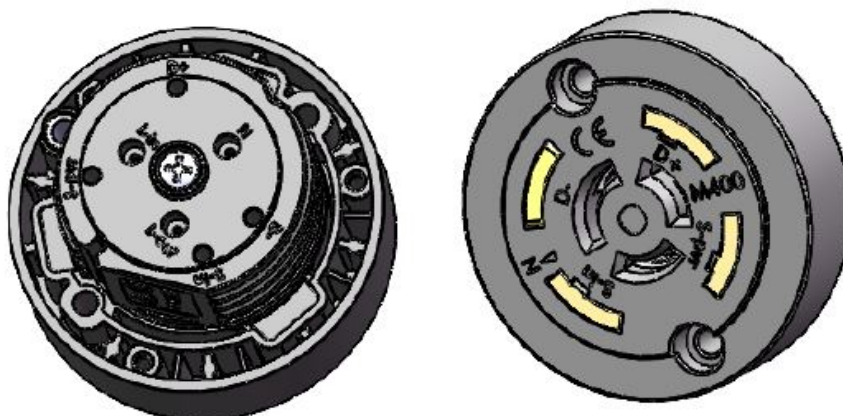
# PHOTOCONTROL PLUG-IN LOCKING TYPE SOCKET PUSH-IN INSERTION

## M400E-

2023



Type: **3 POLES (3 WAYS) "POWER" + 4 POLES (4 WAYS) "SIGNAL" PHOTOCONTROL PLUG-IN LOCKING TYPE SOCKET (NEMA SOCKET)  
PUSH-IN INSERTION**



Rated voltage: **480 V AC/DC - 10 V AC/DC for the signal contacts**  
Rated current: **4 A for the power contacts - 0,10 A for the signal contacts**  
Working temperature: **T -30°C + T 110°C**

Type of clamps for cables connection: **SPRING CLAMPS (Push-in insertion / permanent)**

Clamps connecting capacity: **0,75 mmq (power)  
0,50-0,75 mmq (signal)**

Cables: **Power - single or double insulation max. diameter 4,00 mm  
Signal - single insulation max. diameter 2,60 mm**

In conformity to the standards: **EN60598-1: 2015  
(Following the ANSI C136.41-2013 and ANSI C136.10-2017 as far as applicable)**

In conformity to the requirements of the directive: **2014/35/EU**

Approval marks: **CSv-IMQ**

### Preparation of the conductors:

- Flexible conductor stripped 9-10 mm and tinned (not tinned in excess)
- Flexible conductor stripped 9-10 mm and Sonic welded
- Solid conductor stripped 9-10 mm

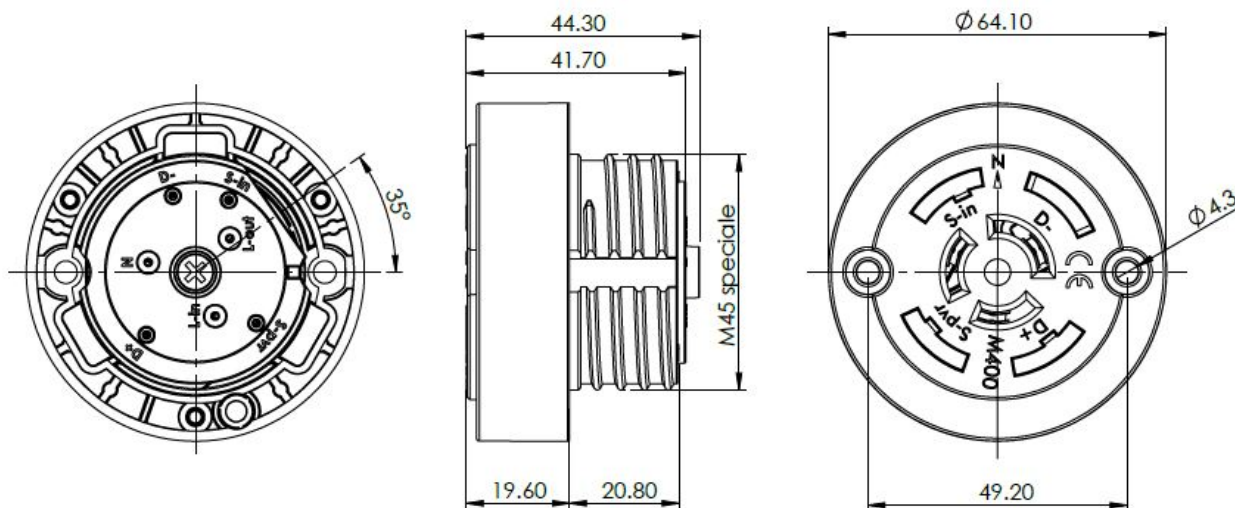


# PHOTOCONTROL PLUG-IN LOCKING TYPE SOCKET PUSH-IN INSERTION

## Details of the construction:



# PHOTOCONTROL PLUG-IN LOCKING TYPE SOCKET PUSH-IN INSERTION



## **M400E-: part socket of the 3 Poles (3 Ways) "Power" + 4 poles (4 Ways) "Signal"**

**to be fixed using two M4 screws (front fixing) or using the nut 2026F (rear fixing) interposing, between the device and the fixing structure, the gasket 2029F.**

- External envelope in black thermoplastic material PBT.
  - Internal envelope with special thread M45 in black thermoplastic material PBT.
  - Power contacts in tin-plated phosphorous bronze with male lamellar connection (1 contact for the phase "Line-Out" to the control unit, 1 contact for the phase "Line-In" from the control unit to the fixture and 1 contact for the neutral).
  - Signal contacts in gold-plated and silver-plated brass with male lamellar connection. (1 contact for the signal "D-", 1 contact for the signal "D+", 1 contact for the signal "S-in" and 1 contact for the signal "S-pvr").
  - Gasket in thermoplastic rubber TPE (not included in the code, it shall be ordered as code 2029F).
  - Fixing nut with special thread M45 and hexagonal key 50 mm in thermoplastic material (not included in the code, it shall be ordered as code 2029F).
- 
- Weight: 93,4 g.
  - Weight of the gasket 2029F: 3,2 g.
  - Weight of the nut 2026F: 11 g.



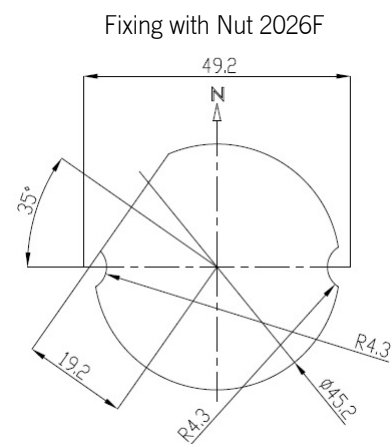
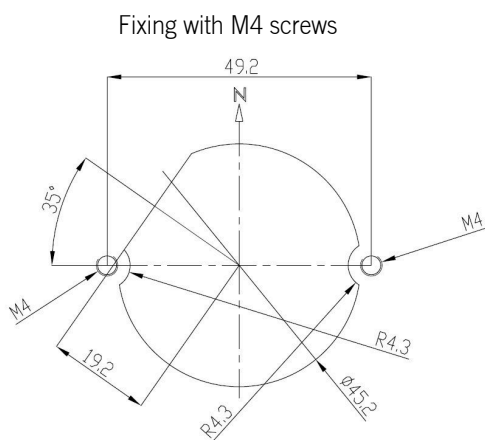
# PHOTOCONTROL PLUG-IN LOCKING TYPE SOCKET PUSH-IN INSERTION

## Fixing of the Socket M400E-:

- If front fixing, using two M4 screws (length 15 mm + structure thickness) and tightening them with a recommended torque force of 1.6 Nm (maximum allowed torque force 1,8 Nm).
- If rear fixing, using the Nut 2026F and tightening it with a hexagonal key 50 mm tool with a recommended torque force of 5,0 Nm (maximum allowed torque force 7,0 Nm).

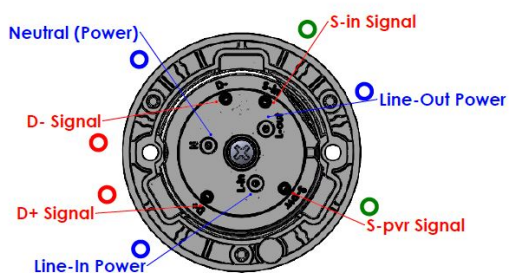
For the fixing, it is suggested to interpose the gasket 2029F between the device and the fixture structure.

## Template to fix the socket M400C- on structures:

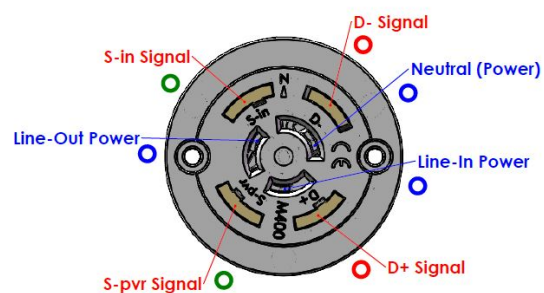


## Wiring Diagram

Wiring diagram / frontal view



Wiring diagram / back view



- 3 Poles Power connector
- 2 Poles Signal connector
- 2 Poles Signal connector