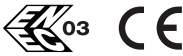


SWITCH SERIES "UNICO"

M70-



Switch:

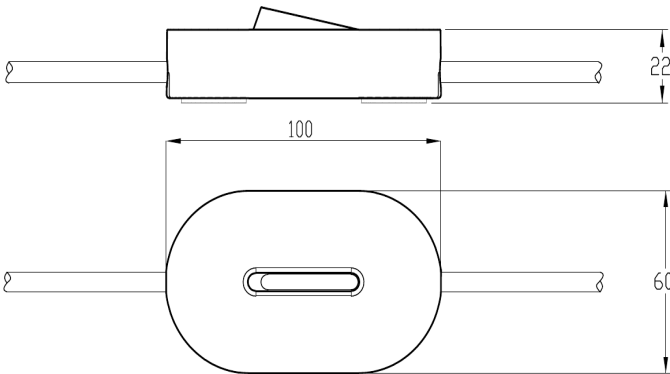
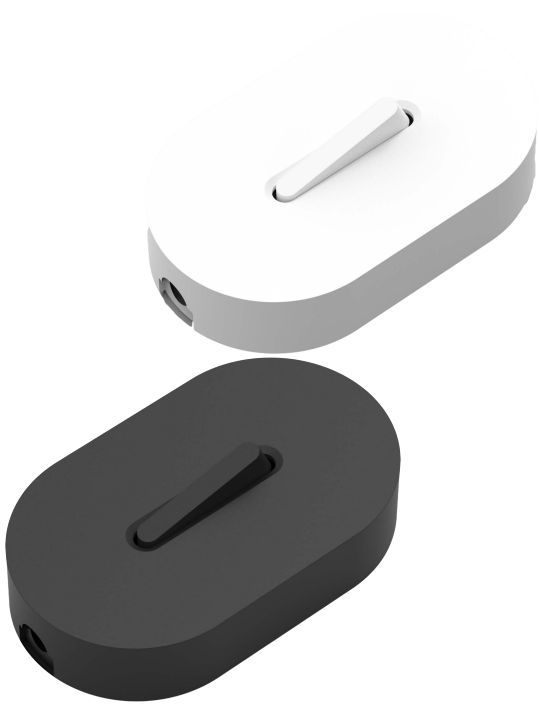
SWITCH
FOR FLOOR LAMPS
SERIES "UNICO"

Rated voltage:
Rated current:
Insulation class:
Type of clamps for cables
connection:
Clamps connecting capacity:
Protection degree:
In conformity to the standards:
In conformity to the requirements
of the directive:
Approval marks:

250 Vac
2 (1) A
II

CRIMPED CLAMPS
0.75 mm²
IP40
EN 61058-2
2014/35/EU
ENEC 03

M70N: switch in version with black envelope
M70B: switch in version with white envelope



• Table of cables connected to the switch:

Insulation	Shape	Section	Temperature	Type	Code
PVC + PVC	flat	2 x 0,75 mm ²	T70°C	H03VVH2-F	RRP7-
PVC + PVC	flat	2 x 0,75 mm ²	T90°C	H03V2V2H2-F	RHP7-
PVC + PVC	round	2 x 0,75 mm ²	T70°C	H03VV-F	RR27-
PVC + PVC	round	2 x 0,75 mm ²	T90°C	H03V2V2-F	RH27-
PVC + PVC	round	2 x 0,75 mm ²	T70°C	H05VV-F	RC27-
PVC + PVC	round	2 x 0,75 mm ²	T90°C	H05V2V2-F	RF27-
RUBBER + RUBBER	round	2 x 0,75 mm ²	T70°C	H05RN-F	NC27N
PVC + PVC + FABRIC	flat	2 x 0,75 mm ²	T70°C (+T70°C)	(H03VVH2-F)	RRP7X--
PVC + PVC + FABRIC	flat	2 x 0,75 mm ²	T90°C (+T70°C)	(H03V2V2H2-F)	RHP7X--
PVC + PVC + FABRIC	round	2 x 0,75 mm ²	T70°C (+T70°C)	(H03VV-F)	RR27X--
PVC + PVC + FABRIC	round	2 x 0,75 mm ²	T90°C (+T70°C)	(H03V2V2-F)	RH27X--

- Notes:
- Non rewirable mechanical switch.
 - It is possible to supply the switch connected to a wiring with European 2-pole plug with cable length and working of the free ends according to customer's specifications.
 - Available also in version with bipolar switch (ref. M70Z)
- Envelopes in ABS.
Rocker button in PC.
Contact-holding insert in PA6.
Cable clamp bridge in PA66.
Contacts in brass and phosphorous bronze.
Closing screws in zinc-plated iron. (screws not to be dismantled / one way).
Supporting pads in rubber.

The switch of M70- UNICO series must be supplied already provided with cables.

