

CONNECTORS PLUG AND SOCKET FOR LED_s APPLICATION

M87-

2022

M87P-



Type:

CONNECTION DEVICE PLUG + SOCKET WITH 2 POLES

Rated voltage:

60 V

Rated current:

2,5 A

Working temperature:

T -20°C +120°C

Type of clamps to connect the cables:

CRIMPED

Clamps connecting capacity:

025 ÷ 0,50 mm²

Protection degree (IP):

IP20

In conformity to the standards:

EN 61984

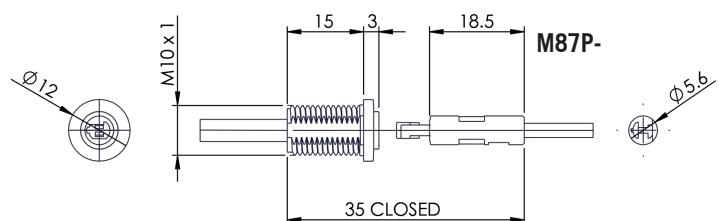
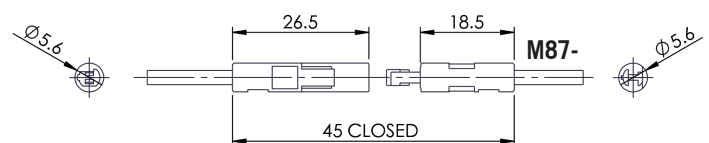
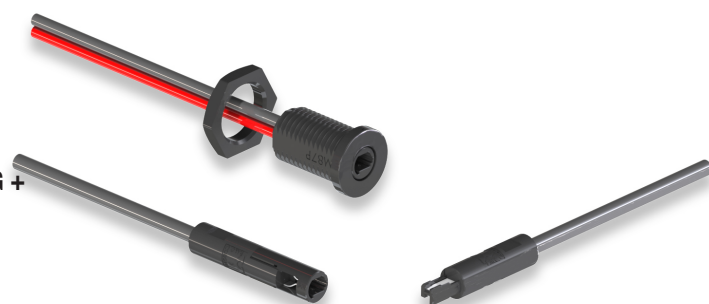
In conformity to the requirements of the directive:

2014/35/EU

Approval marks:

M87-: 2 poles connector male plug + female socket, diameter 5,6 mm.

M87P-: 2 poles connector male plug + female socket with external envelope for panels, with thread M10x 1 (including fixing nut CH14 mm, art.2067-).



• Table of the **two poles** cables connected to the connector:

Insulation	Shape	Sections	Dimension mm	Code/Page
PVC + PVC	round	2x 0,35 mm ²	Ø 4,0	RL29- (page 9112)
PVC + PVC	flat	2x 0,35 mm ²	4,0 x 2,5	RLP9- (page 9112)
FEP + PVC	round	2x 0,35 mm ²	Ø 3,6	MTV9- / BTV9- (page 9114)
FEP + PVC TRANSPARENT	round	2x 0,35 mm ²	Ø 3,6	BT29Q / MT29Q (page 9113)
FEP + PVC	round	2x 0,50 mm ²	Ø 3,9	MTV0- / BTV0- (page 9114)
FEP + PVC TRANSPARENT	round	2x 0,50 mm ²	Ø 3,9	BT20Q / MT20Q (page 9113)
FEP + PVC	flat	2x 0,35 mm ²	3,6 x 2,4	MTD9- / BTD9- (page 9114)
FEP + PVC TRANSPARENT	flat	2x 0,35 mm ²	3,6 x 2,4	BTP9Q / MTP9Q (page 9113)
FEP + PVC	flat	2x 0,50 mm ²	4,2 x 2,7	MTD0- / BTD0- (page 9114)
FEP + PVC TRANSPARENT	flat	2x 0,50 mm ²	4,2 x 2,7	BTPOQ / MTPOQ (page 9113)

• In the transparent cables the polarization of the core(s) is carried out with line(s) of different colour(s)

• Table of the **coaxial** cables connected to the connector:

Insulation	Shape	Sections	Dimension mm	Code/Page
FEP + PVC	round	2 x 0,35 mm ²	Ø 2,7	BE29 (page 9106)
FEP + PVC	round	2 x 0,50 mm ²	Ø 3,2	BE20 (page 9106)
FEP + PVC EXTRA-FLEXIBLE	round	2 x 0,50 mm ²	Ø 2,7	BK20- (page 9107)

• Table of the **single pole** cables connected to the connector:

Insulation	Shape	Sections	Dimension mm	Code/Page
FEP (red - black)	round	2 x 0,35 mm ²	Ø 1,3	T019U (page 9015)
FEP (red - black)	round	2 x 0,50 mm ²	Ø 1,4	T010U (page 9015)

ATTENTION: the female socket-connector must be connected to the device that will be powered.

• Template to fix the connector on structures (for the version M87P-).

