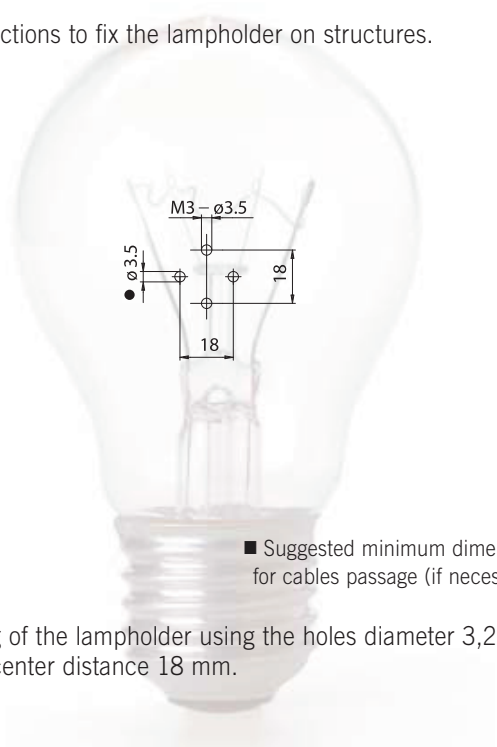


EDISON SCREW LAMPHOLDERS

Note: to tighten the clamps screws, use a screwdriver with a slot max diameter 3,5 mm.

- Porcelain body.
Contacts in special alloy.
Brass clamps with slot screw not completely tightened.
Cap in zinc or nickel-plated copper.
- Weight: 35 g.

- Instructions to fix the lampholder on structures.



■ Suggested minimum dimension
for cables passage (if necessary)

- Fixing of the lampholder using the holes diameter 3,2 mm with center distance 18 mm.



P05

1984



Lampholder:

E14

Rated voltage:

250 V

Rated current:

2 A

Working temperature:

T 210°C

Type of clamps for

cables connection:

SCREW CLAMPS

Clamps connecting capacity:

0,50÷ 1,00 mm²

Overvoltage category:

III

Protection degree (IP):

IP20

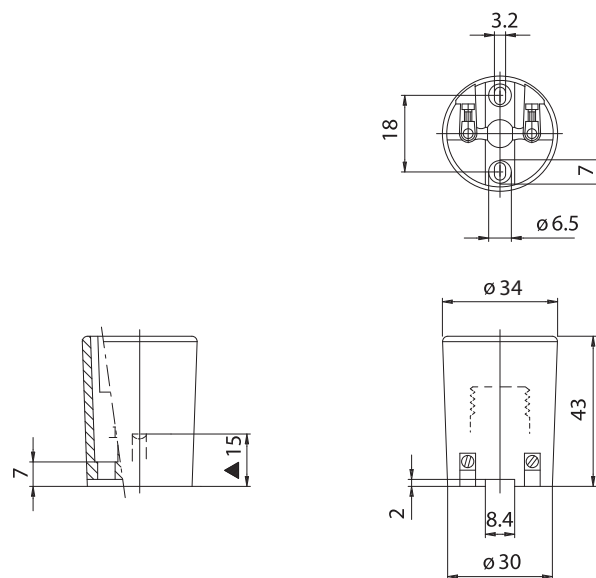
In conformity to the standards:

EN 60238

In conformity to the requirements
of the directive:

2014/35/EU

Approval marks:



- The accessories available are listed at the end of this section.

▲ Central contact distance

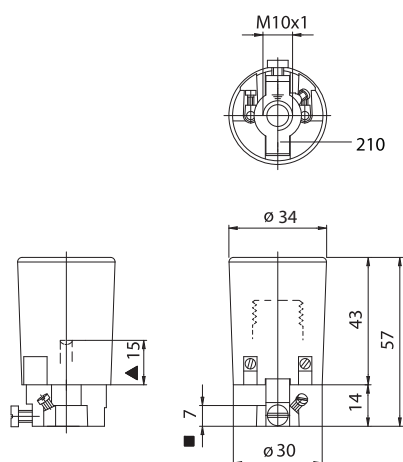


P05H

CE

P05D

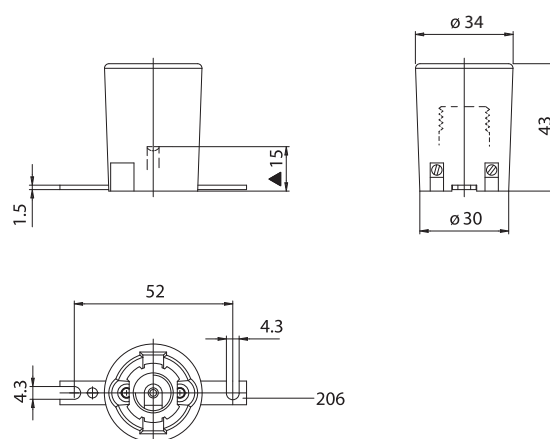
CE



▲ Central contact distance ■ Depth of thread

P05H: P05 lampholder assembled with adapter in white-zinc-plated zamak 16 mm height, with threaded hole M10 x1, with screws for nipple-block and for the ground cable (art. 210).

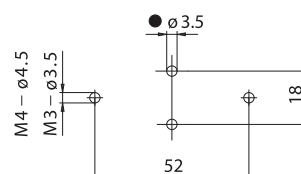
- Weight: 60 g.



▲ Central contact distance

P05D: P05 lampholder assembled with white-zinc-plated iron fixing plate bracket, with slotted holes diameter 4,3 mm with center distance 52 mm (art. 216).

- Weight: 50 g.
- Instructions to fix the lampholder on structures.



● Suggested minimum dimension for cables passage (if necessary)

- Fixing of the lampholder by M10 x1 nipples.

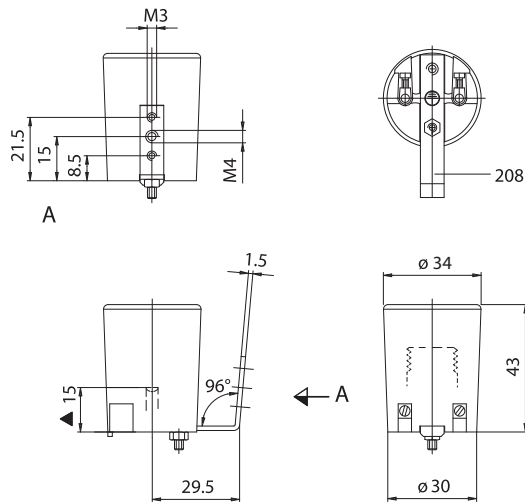
- Fixing of the lampholder using M3 screws, to be inserted in the slotted holes with center distance 52 mm.

P05V

CE

P05B

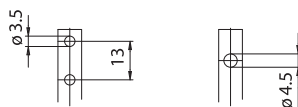
CE



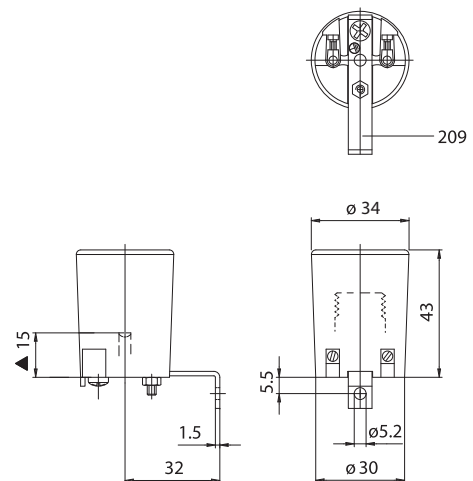
▲ Central contact distance

P05V: P05 lampholder assembled with 96° white-zinc-plated iron fixing bracket, with two threaded holes M3 and one M4 (art. 208).

- Weight: 50 g.
- Instructions to fix the lampholder on structures.



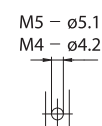
- Fixing of the lampholder by screws, to be tightened on the chosen threaded holes.



▲ Central contact distance

P05B: P05 lampholder assembled 90° with white-zinc-plated iron fixing bracket, with hole diameter 5,2 mm, and screw for the ground cable (art. 209).

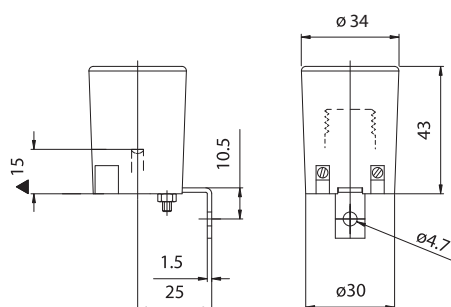
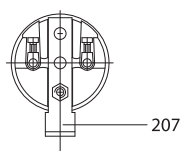
- Weight: 50 g.
- Instructions to fix the lampholder on structures.



- Fixing of the lampholder by screws M4, to be inserted in the bracket hole.

P05C

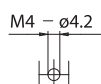
CE



▲ Central contact distance

P05C: P05 lampholder assembled with 90° white-zinc-plated iron fixing bracket, with hole diameter 4,2 mm (art. 207).

- Weight: 50 g.
- Instructions to fix the lampholder on structures.



- Fixing of the lampholder by screws M4, to be inserted in the bracket slot.