

# P120

CE

**Lampholder:**

**E27**

Rated voltage:

**250 V**

Rated current:

**4 A**

Working temperature:

**T 230°C**

Type of clamps for  
cables connection:

**SCREW CLAMPS  
0,50 ÷ 2,50 mm<sup>2</sup>**

Clamps connecting capacity:

**III**

Overvoltage category:

**IP20**

Protection degree (IP):

**EN 60238**

In conformity to the standards:

In conformity to the requirements  
of the directive:

**2014/35/EU**

Approval marks:

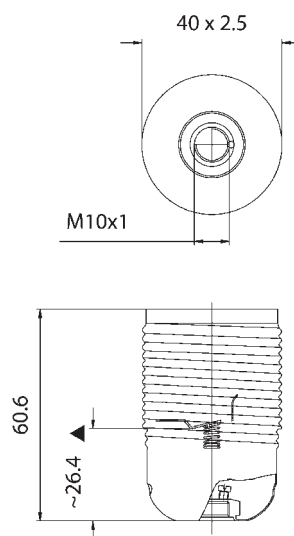
**ENEC 03**



**P120ZB:** P120 lampholder with white zinc-plated envelope.

**P120NI:** P120 lampholder with nickel-plated envelope.

**P1200T:** P120 lampholder with brass-plated envelope.



▲ Central contact distance



# EDISON SCREW LAMPHOLDERS

*The earth clamp is on the base with the contacts and not on the external envelope. This solution has the advantage to spare time in the wiring process of the lampholder.*

*The lampholder is supplied in three unassembled parts.*

*Note: to tighten the clamps screws, use a screwdriver with a slot max diameter 3,5 mm.*

*This lampholder is not manufactured by E.M.C. Colosio.*

- Zinc-plated or nickel-plated external envelope with round thread 40 x2,5 mm.  
Zinc-plated or nickel-plated back cap with threaded hole M10 x1 arranged with screws for nipple-block.  
Base with contacts in thermosetting polyester with earth clamp.  
Nickel-plated contacts in special alloy.  
Brass clamps with slot screws not completely tightened.  
Cap thermosetting polyester.

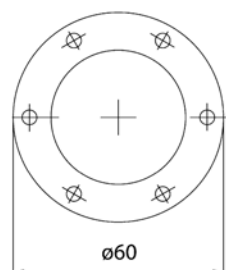
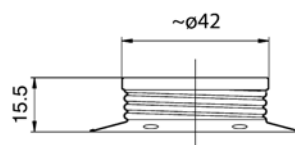
- Weight: 70 g.



**475ZB:** white zinc-plated iron ring-nut with round thread 40 x2,5 mm, height 17,5 mm, with flange diameter 60 mm.

**475NI:** 475 ring-nut in nickel-plated iron.

**4750T:** 475 ring-nut in brass-plated iron.



- Fixing of the lampholder by M10 x1 nipples.

