

FOR VERY LOW TENSION 12 - 24V

P88-

1984

Lampholder:

Rated voltage:
Rated current:
Working temperature:
Connected cables
working temperature:
Protection grade:
In conformity to the standards:

G4
24 V
4 A
T 250°C
T 90°÷ 250°C
IP00
EN 60838-1

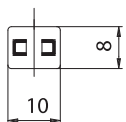
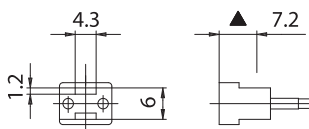
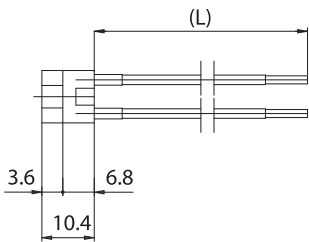
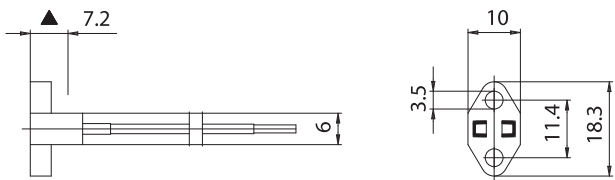


Approval marks:

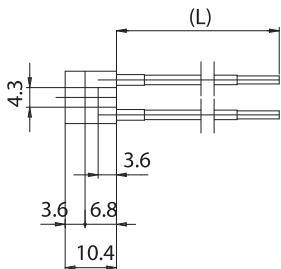
- P88P:** lampholder with fixing ears and crimped cables insulated with silicone protections.
P88SP: lampholder without fixing ears and with crimped cables insulated with silicone protections.
P88-P88S: lampholder with crimped cables without insulated silicone protections.

Single-conductor flexible connecting cables crimped to the lampholder:

Insulation	T in °C	Conduct.	Available sections in mm²			
			0,50	0,75	1,00	1,50
Silicone <i>Single insulation</i>	180	CuSn	•	•	•	•
Silicone+glass-braid <i>Single insulation</i>	180	CuSn	•	•	•	•
FEP <i>Single insulation</i>	180	CuSn	•	•	•	•
PTFE <i>Single insulation</i>	180	CuSn	•	•	•	•
PTFE <i>Single insulation</i>	250	CuNi	•	•	•	•
PFA <i>Single insulation</i>	260	CuNi	•	•	•	•



P88



P88S

▲ Lamp contacts reference plane



LAMPHOLDER FOR INCANDESCENT HALOGEN LAMPS

P88-



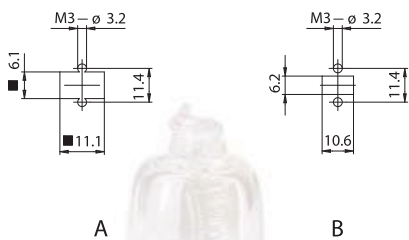
Lampholder:	G4
Rated current:	4 A
Rated voltage:	24 V★
Working temperature:	T 250°C
Connected cables working temperature:	T 90°÷ 250°C
In conformity to the standards:	UL 496
Approval marks:	UR

- Steatite body.
Contacts in special alloy.
External crimp of the cables to the lampholder, insulated with silicone protections T200°C, ref. art. P88P or P88SP.
(Not insulated crimped cables, ref. art. P88 or P88S).
- Weight of the lampholder in standard execution
(with cables L = 15 cm): 5 g.

Single-conductor flexible connecting cables crimped to the lampholder:

Insulation	T in °C	Conduct.	Available voltage and AWG		
			300V	600V	18AWG
Silicone <i>Single insulation</i>	200	CuSn		•	•
Silicone+glass-braid <i>Single insulation</i>	200	CuSn		•	•
FEP <i>Single insulation</i>	200	CuNi	•	•	•
PTFE <i>Single insulation</i>	250	CuNi	•	•	•

- Indications to fix the lampholder P88 on structures.



A - Front fixing B - Back fixing
■ Free area to insert the lamp

- Fixing of lampholder P88- by holes diameter 3,2 mm, with center distance 11,4 mm.
Fixing of lampholder P88S- coupling of half-shells with predetermined profile.

★ The UL version can also be used by rated voltage 120V, maximum power 100W.
In this case the distance between the metal parts, which are not insulated or of different polarizations, must be at least 1,2 mm and the lighting fixture must be approved by Underwriters Laboratories Inc. (UL).

